

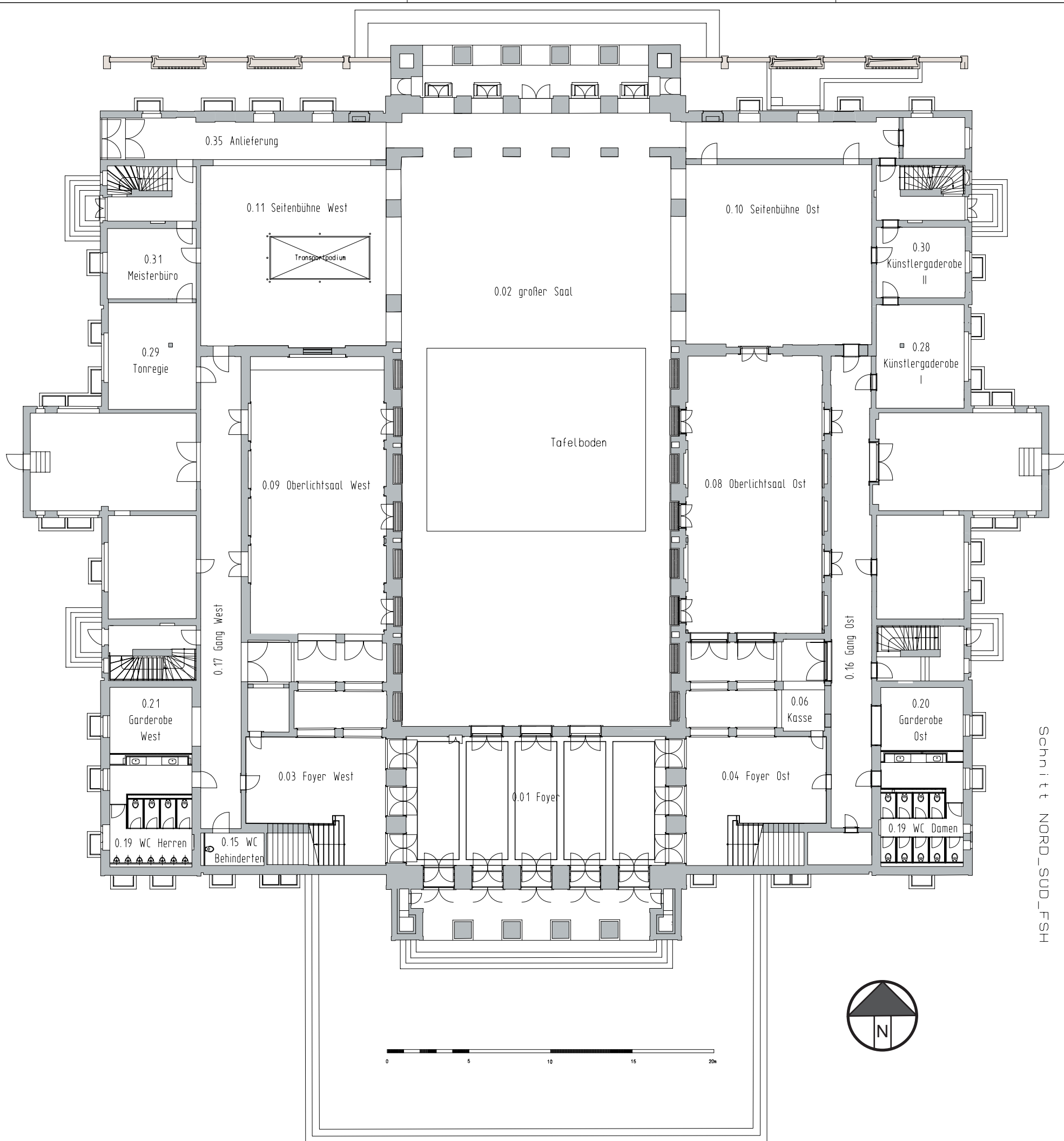
FESTSPIELHAUS HELLERAU



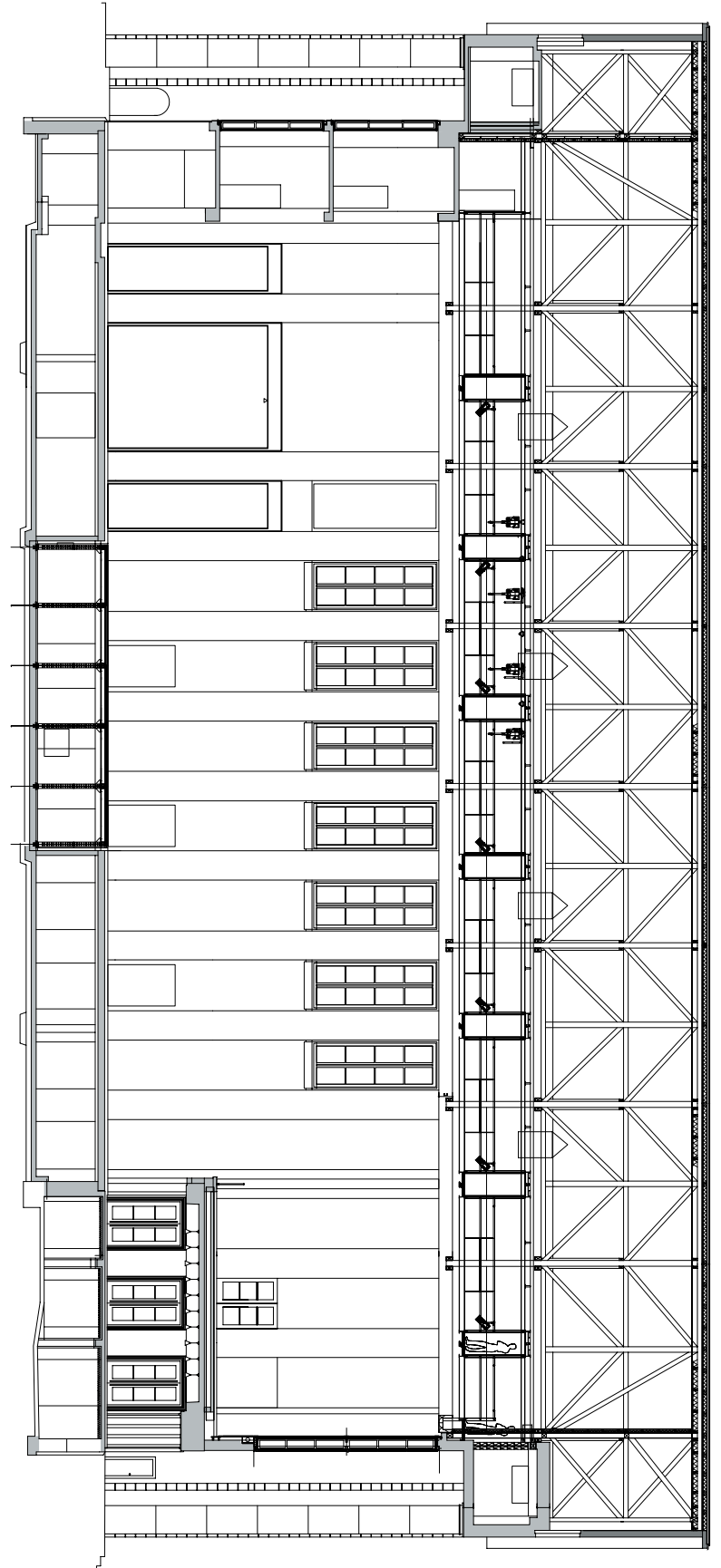
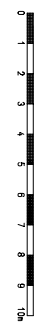
Schnitt Festspielhaus Hellerau Ost-West



Technische Informationen/ Technical information

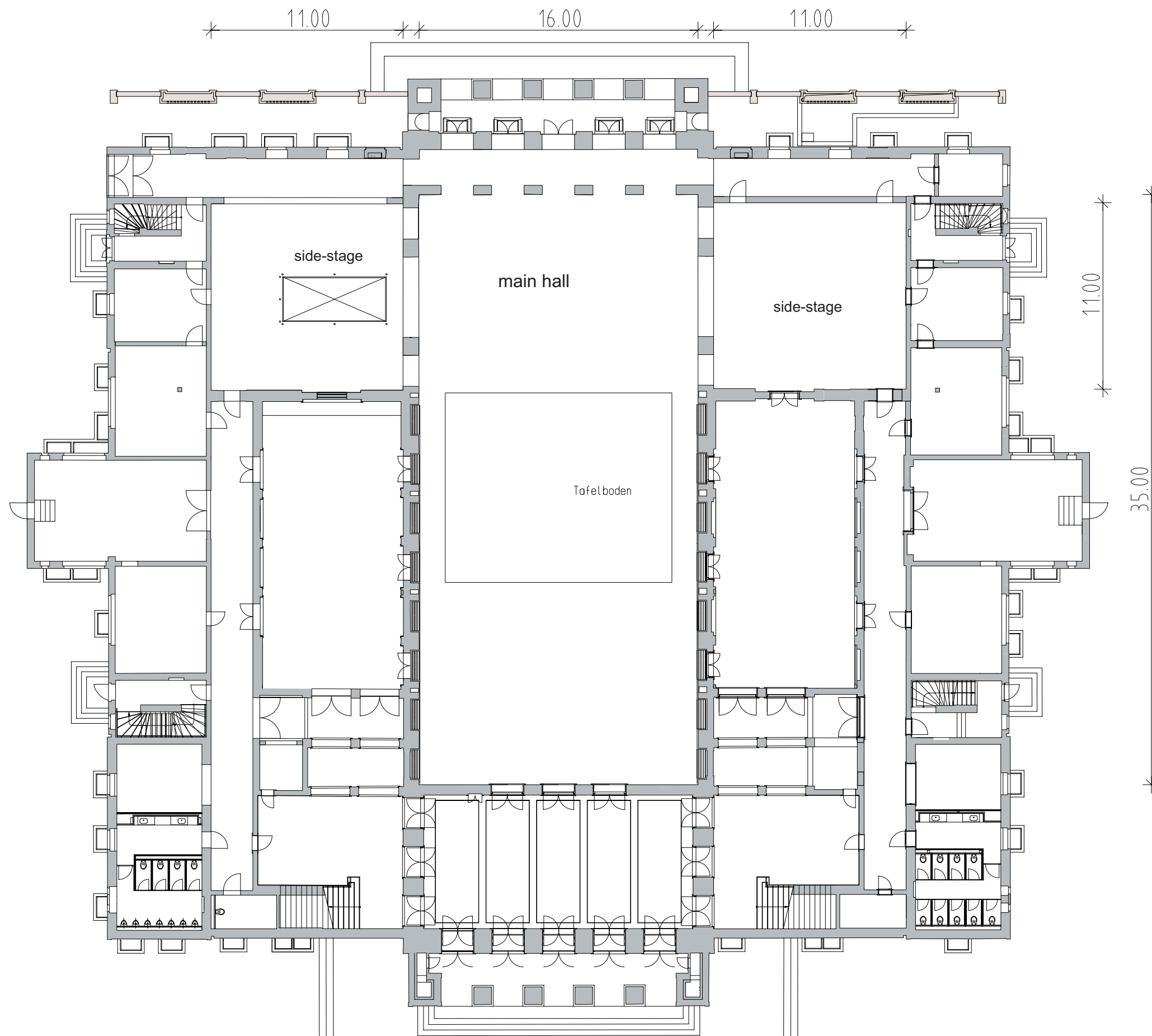


Schnitt_NORD_SUD_FSH



Produktion:	Oberlichtsaal WEST Festspielhaus Hellererhaus
Maßstab : 1:100	Datum 13.12.2007
gezeichnet :	t.blasberg

Zeichnungsvorlage MSP · München



Main hall

scenical areas:

The main hall is composed out of two areas.

1. footprint on ground floor 34.50m x 16.50m/+0.00m
2. south gallery 9.00m x 16.50m /+4.05m

Centered in the base area on the ground floor is a mobile tile-floor-system with a size of 11.00m x 13.50m. Opening this system allows for exit/entry-situations, transformations or an orchestra pit.

Possibility of lowering to -2.30m.

At regular seating the scenical area has size of about 16m width and 20m depth.

(for precise measurements see blueprint of the stage)

To the left and right side of the main stage are side-stages with a floor space of 11.00m x 11.00m (see ground plan and photo)

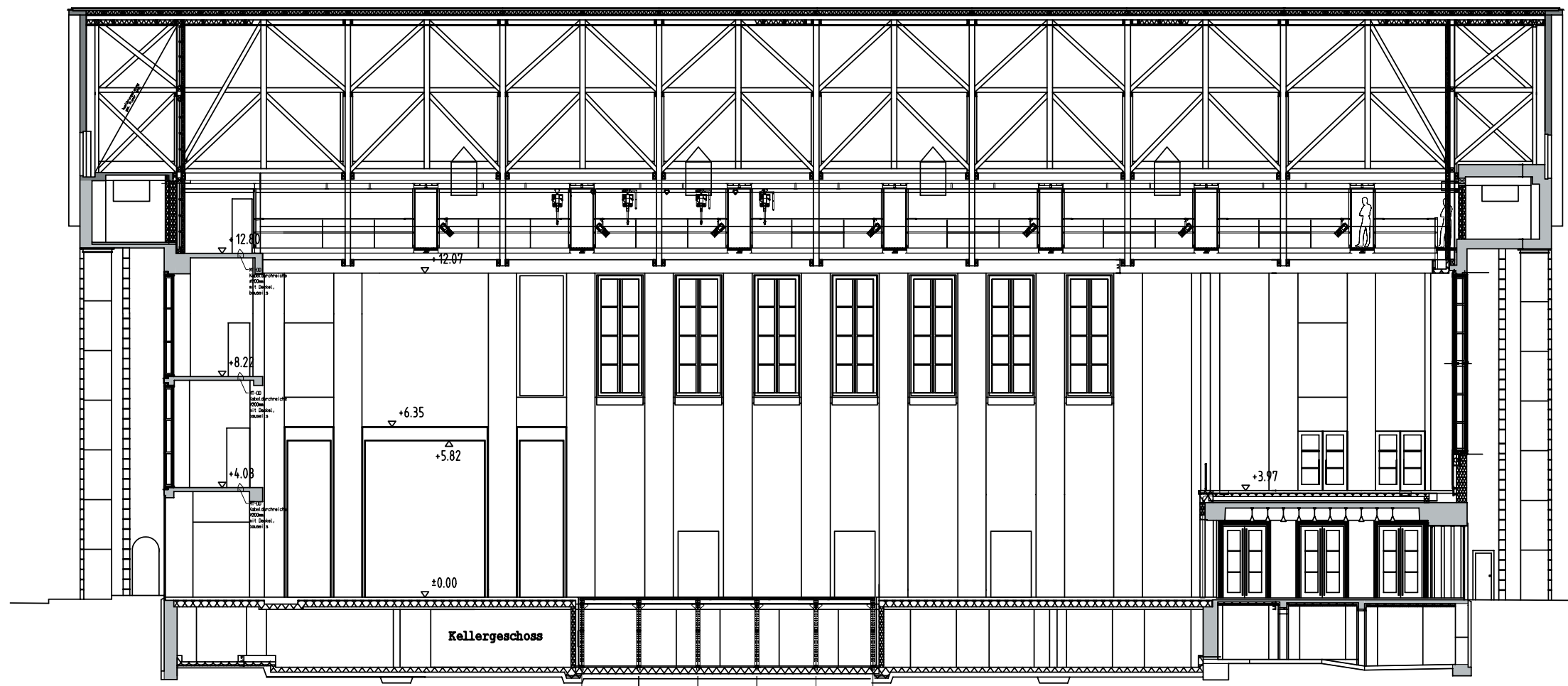
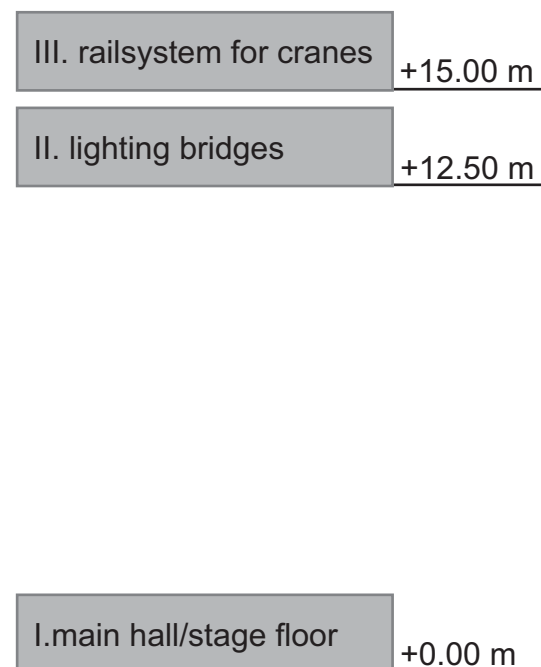


Produktion:	Grundriss Erdgeschoss Festspielhaus Hellerau
Maßstab : 1:100	Datum 17.05.2008
gezeichnet :	t.blosberg

technical areas:

The main hall consists of 3 technical layers

- I. main hall/stage floor
- II. lighting bridges
- III. railsystem for cranes



I. Main hall and floor

The whole floor of the main hall consists of Oregon – Pine wooden stage-floor. This Oregon-Pine-surface is glued together with a multi-layered wooden plate of 36mm thickness. In the case of connections into the stage floor it is not allowed to anchor below 45mm to prevent the damage of cables beneath the stage floor.

The maximum stress of the main floor is 5 kN to 7.5 kN per m². Exceeding this limit needs to be arranged with the theater administration.

On the outside margin is a 40cm wide, folding cable tube with connections to be used by the light-, sound- and media-department. The outlets for fresh air are located between the columns of the northern wall responsible for the ventilation of the main hall. (maximum stress on the ventilation grill is 1.5 kN per m²)

In the center of the main Hall (see plan of stage) a floor-tile-

system with a base of 13m x 11m is located. Each tile consists of multi-layered plates with an Oregon-Pine-surface. The plate-grid is 2.20m x 0.55m and is free to open arbitrarily.

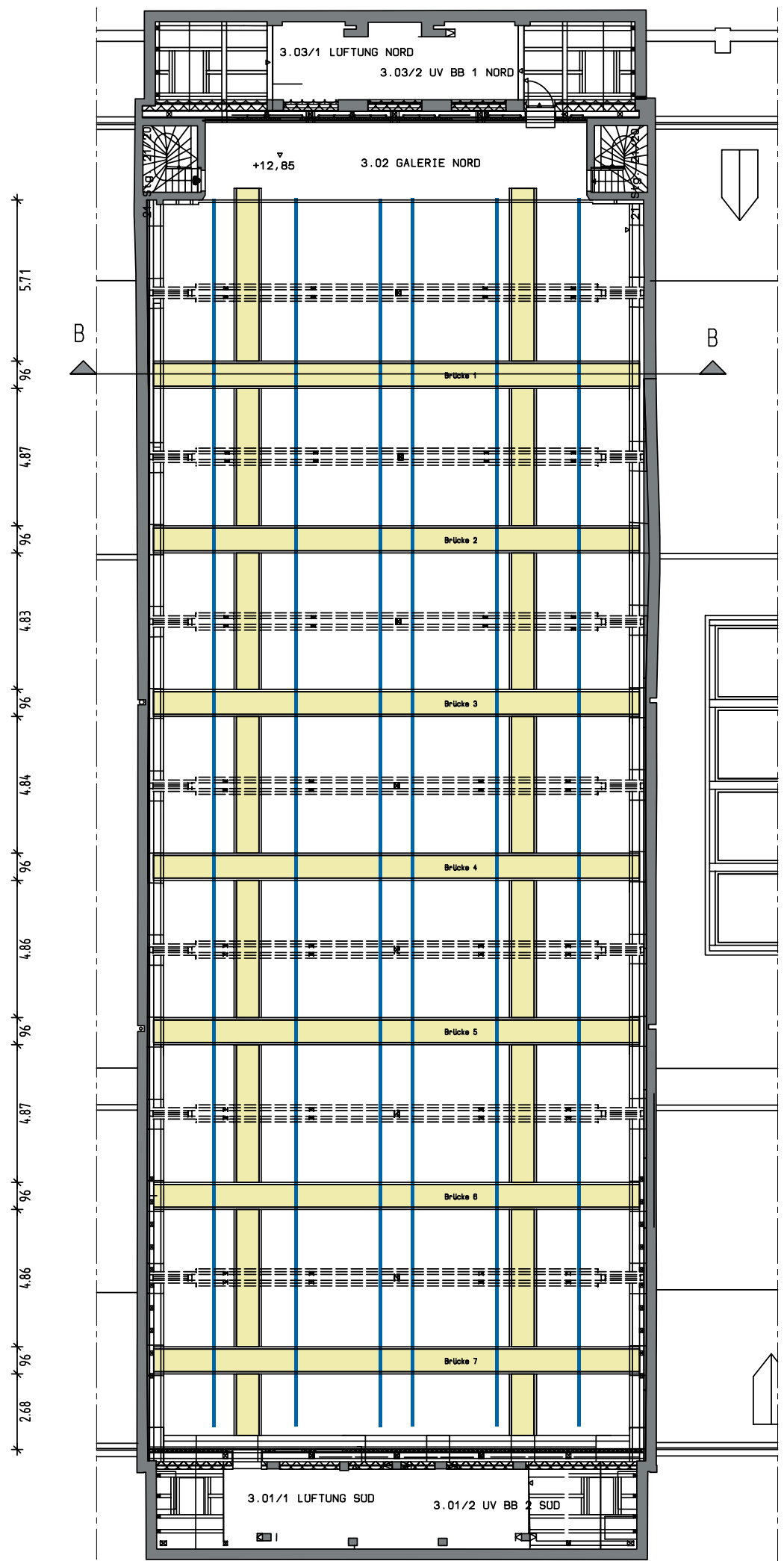
II. Lighting bridges

All lighting bridges are only to be used by instructed personnel. The railing consists of pipes with a diameter of 48.3mm and a wall tubing of 3mm, allowing for a point load of 0.5 kN per meter. The uppermost part of the railing is twofold and placed at 14m height. Multiple connections for all departments are located on the catwalks.

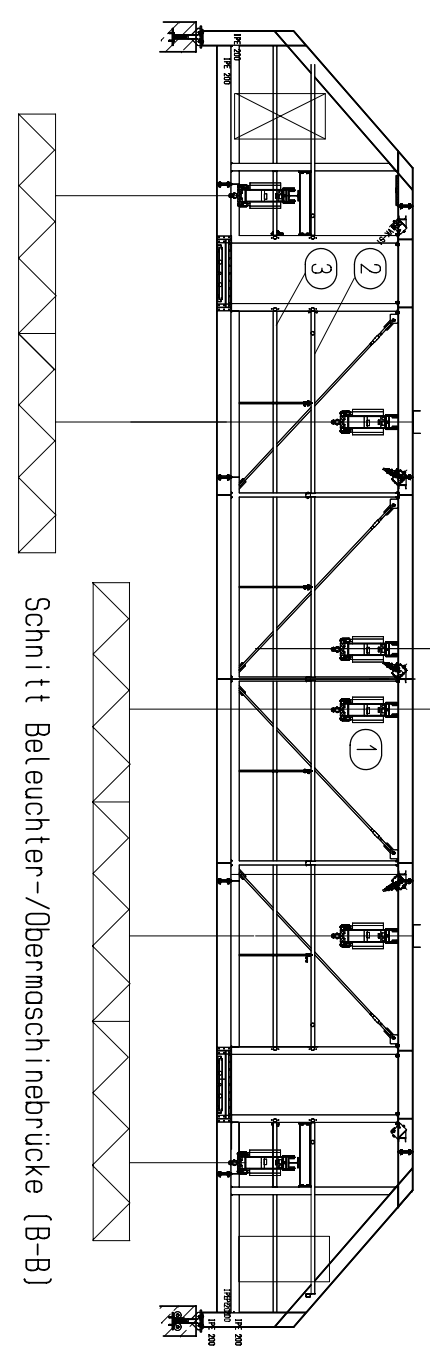
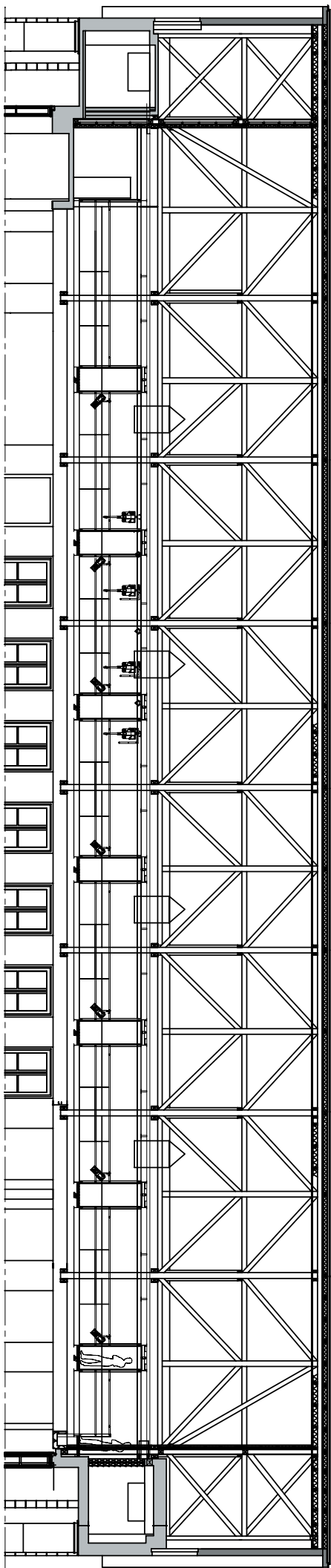
III. Railsystem for rigging/ lifting

A loading bus system (for decoration, truss, lighting- or soundequipment, etc) is located above the gangway. These 6 rails run lengthwise through the main hall with a spacing of about 3m for dollies with individually controllable hoists, which can be assigned freely to all rails. The two rails in the middle are constructed with a spacing of 80cm.

At this time the rigging-system is equipped 8 ASM steel band hoist p 250 TH Servo (BGV C1) and 4 ASM-chainhoists OTTO 500 (BGV C1).



Schienen mit Rollwagen für Punktzug/
Rails for rolling carriage of the hoist



- ① Schiene mit Rollwagen für Punktzug/
Rail for rolling carriage of the hoist
- ② Handlauf/grab
- ③ Knielauf/Pipe for light or other load

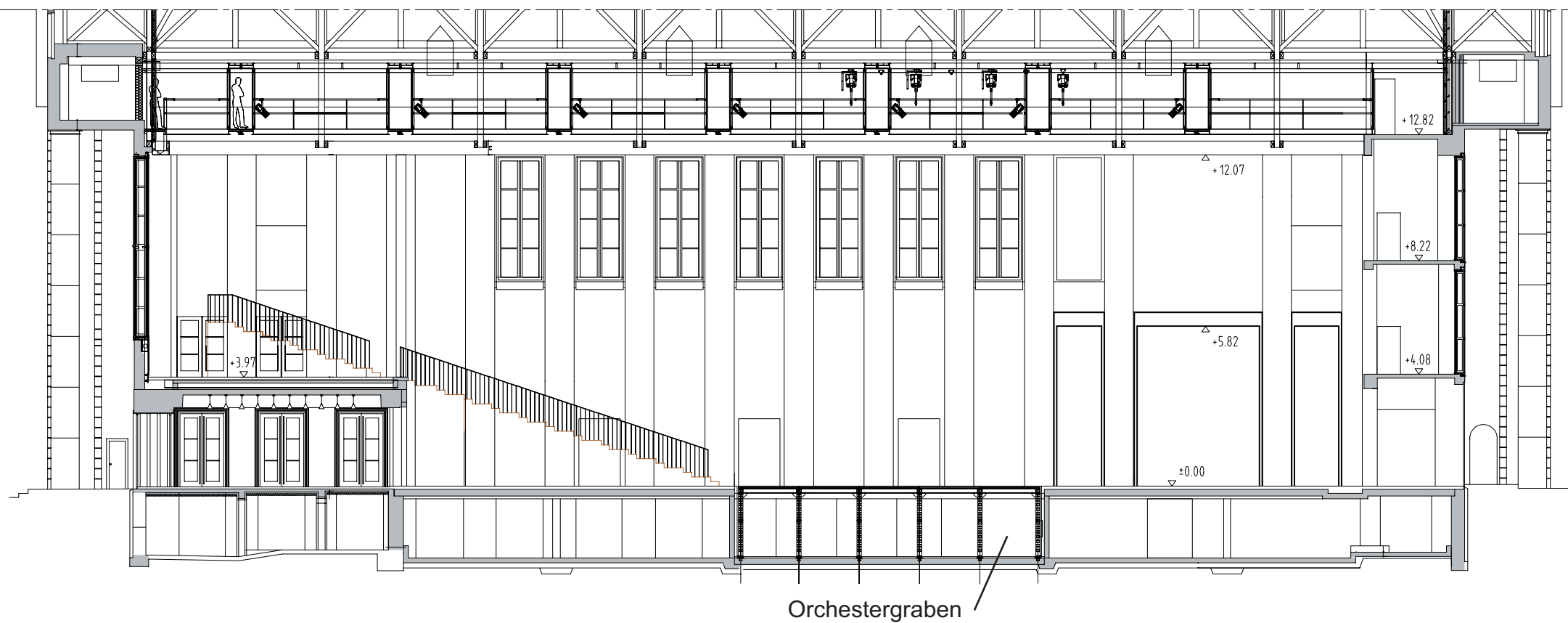
Technical data ASM steel band hoist P 250

- maximum load 2.5 kN
- speed continuously adjustable between 0.06 to 12m/min
- path-time-measurement
- load measurement

Technical data ASM chain-hoist 500 BGC C1 :

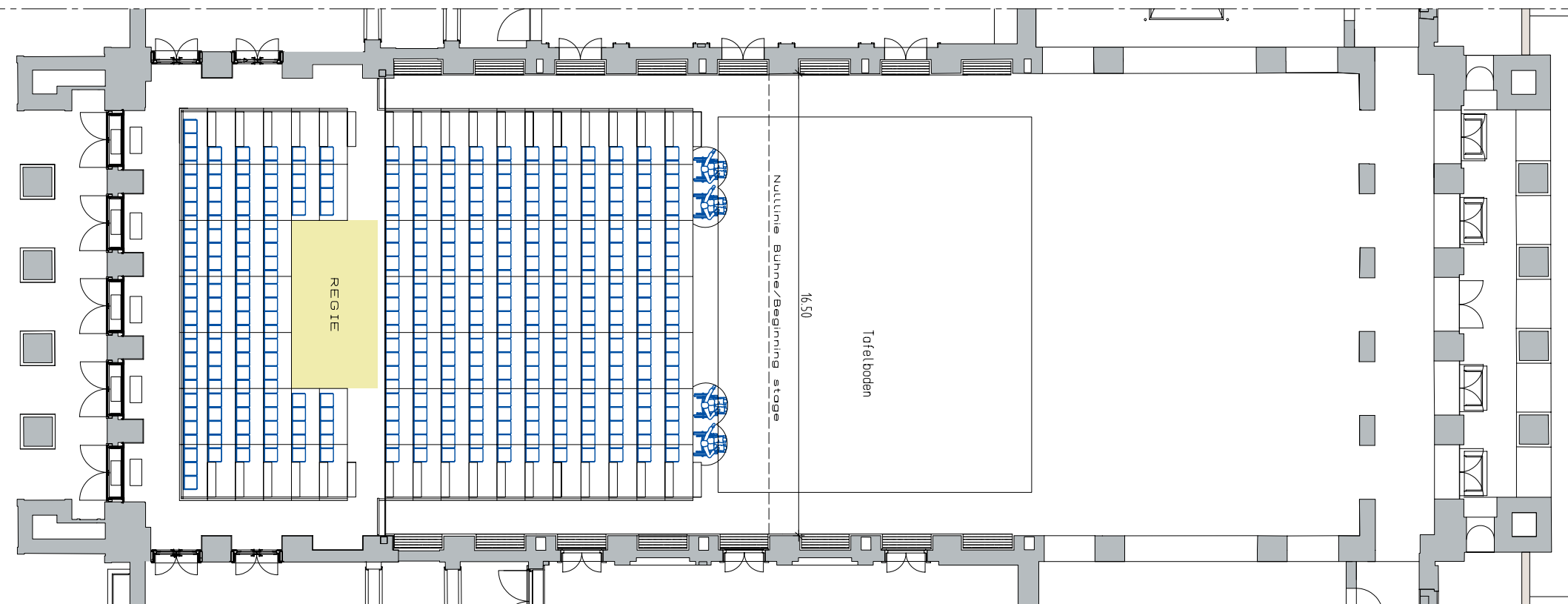
- maximum load 5.0 kN
- speed 4m/min

HELLERAU Europäisches Zentrum der Künste European Centre for the Arts	
Produktion:	Beleuchterbrücken/Obermaschine Festspielhaus Hellerau
Maßstab :	Datum 20.05.08
gezeichnet :	t.blasberg



Schnitt NORD_SUD_FSH

13.39 21.09



Basic equipment Festspielhaus Hellerau

The basic configuration of equipment of the Festspielhaus Hellerau is mobile and flexible. The lighting asset features a main- and emergency-control along with additional consoles. The FOH-position can be adjusted to the different seating situations as the sound department, for example, features a grid of digital connections making it flexible/mobile.

The 4 main departments:

stage

- set building
- rigging
- workshop

lighting departement

sound-/media-department

- sound
- media/networking
- video
- recording
- building services

·house-inspection

- (emergency)power supply
- air-conditioning/heating
- evacuation-/emergencysystems

The following lists contain excerpts of the basic equipment.

A wide selection of equipment can be achieved through a network with other theaters and rental agency for event equipment.



Produktion:	Großer Saal Hauptspielrichtung mit Tribüne
Maßstab:	Datum 22.05.08
gezeichnet:	t.blasberg

Oberlichtsaal Ost:

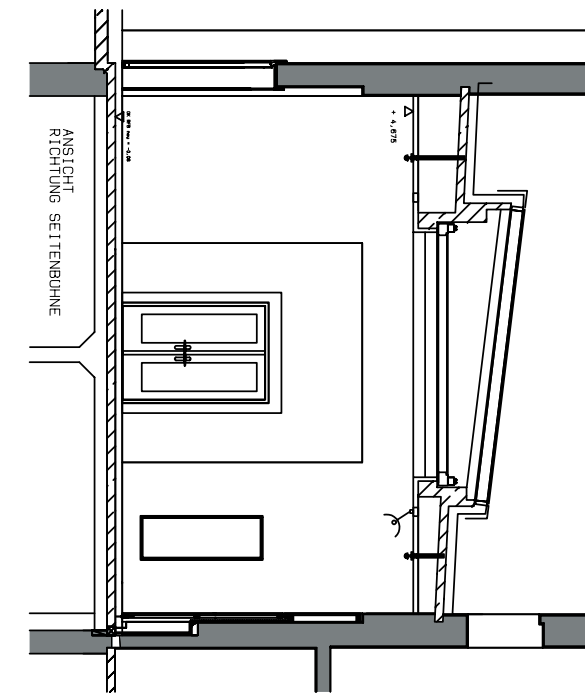
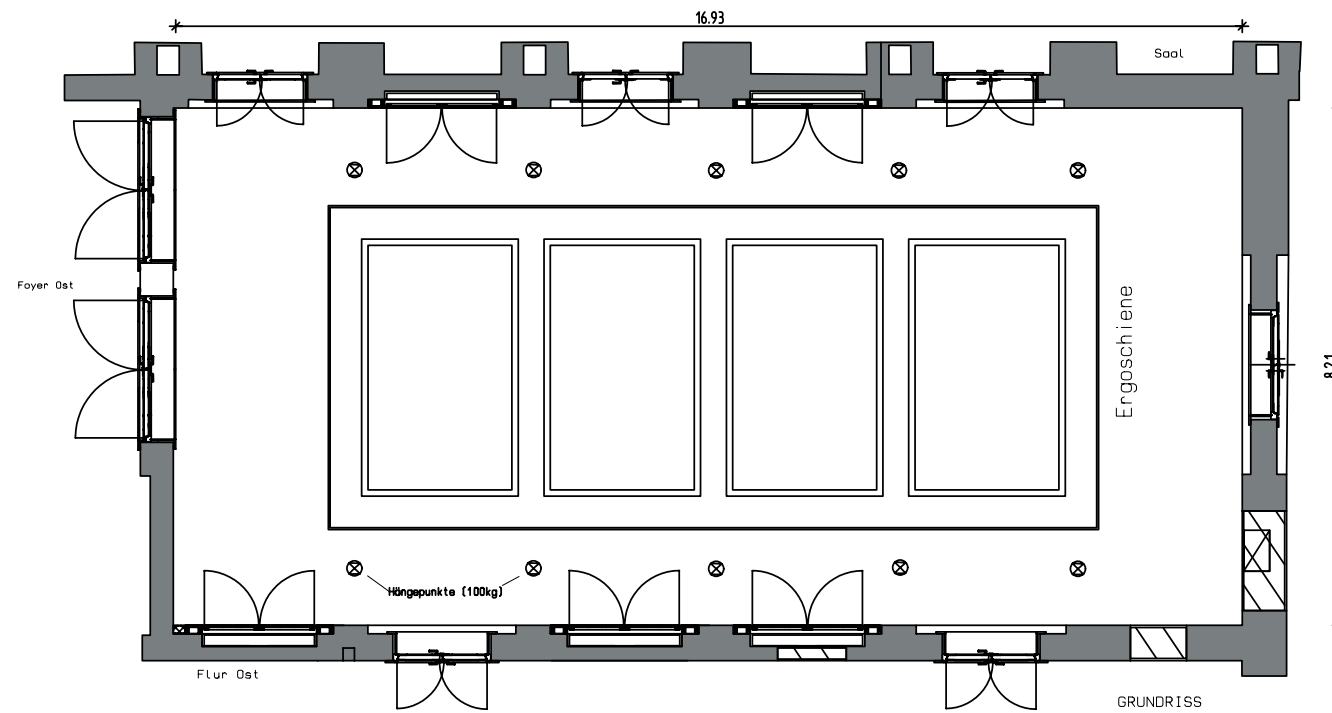
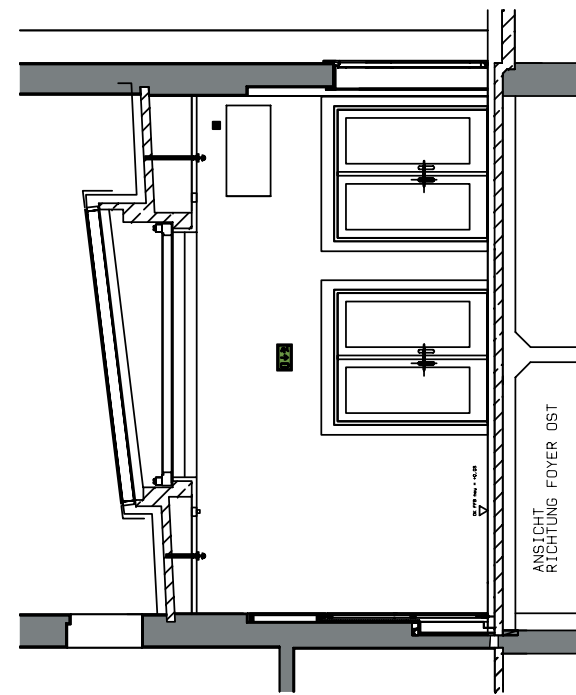
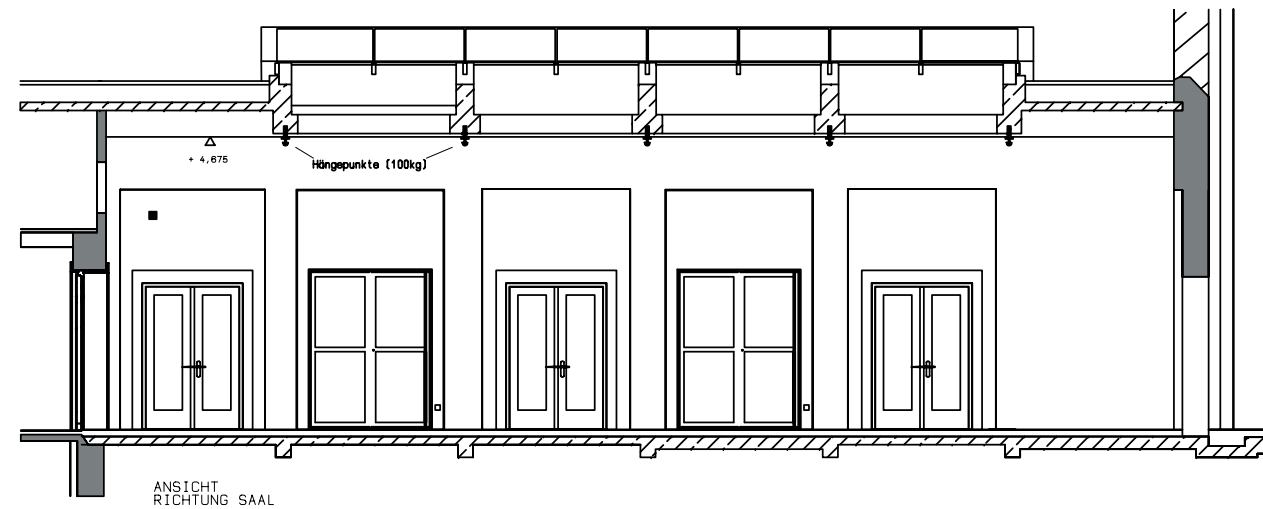
Raumgröße:
 Länge 17 m
 Breite 8 m
 Höhe 4,60 m

Wandfarbe weiß
 Fussboden Terrazzo hellgrau
 (Belastbarkeit 7,5 kN/m²)

Technische Ausstattung:

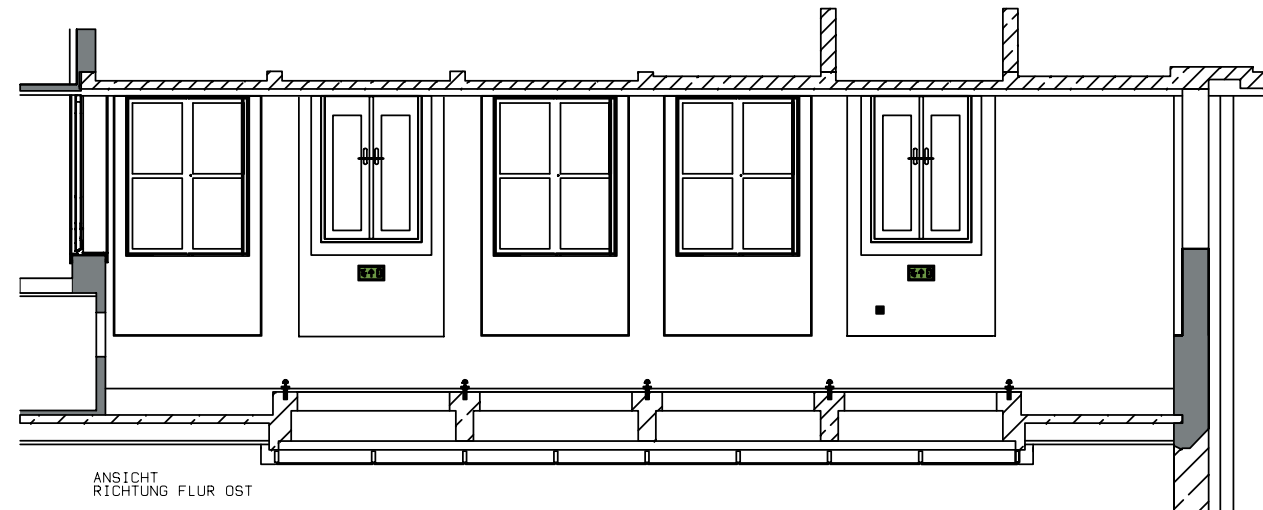
Ergoschiene mit 12 Kreisen

10 Hängepunkte senkrechte Belastung von 100 kg



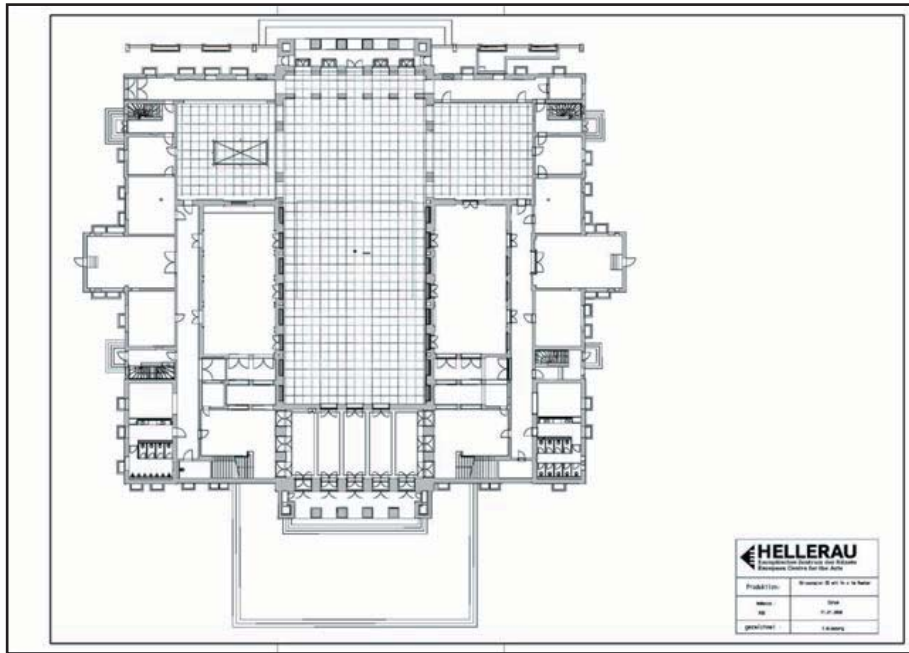
Raumnutzung:

Kammerkonzerte
 Probebühne
 Lounge
 Performance
 Konferenz

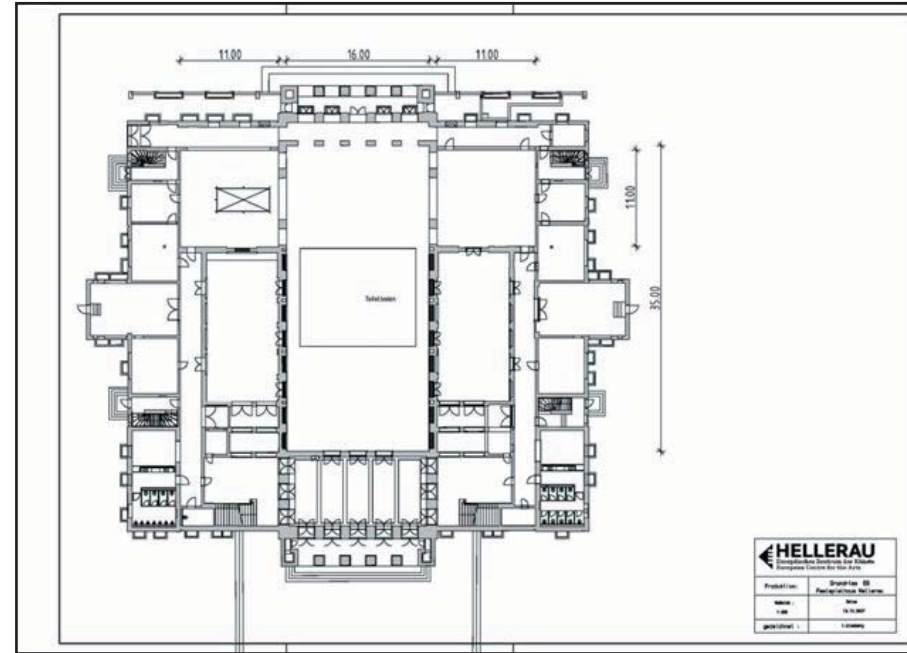


HELLERAU
 Europäisches Zentrum der Künste
 European Centre for the Arts

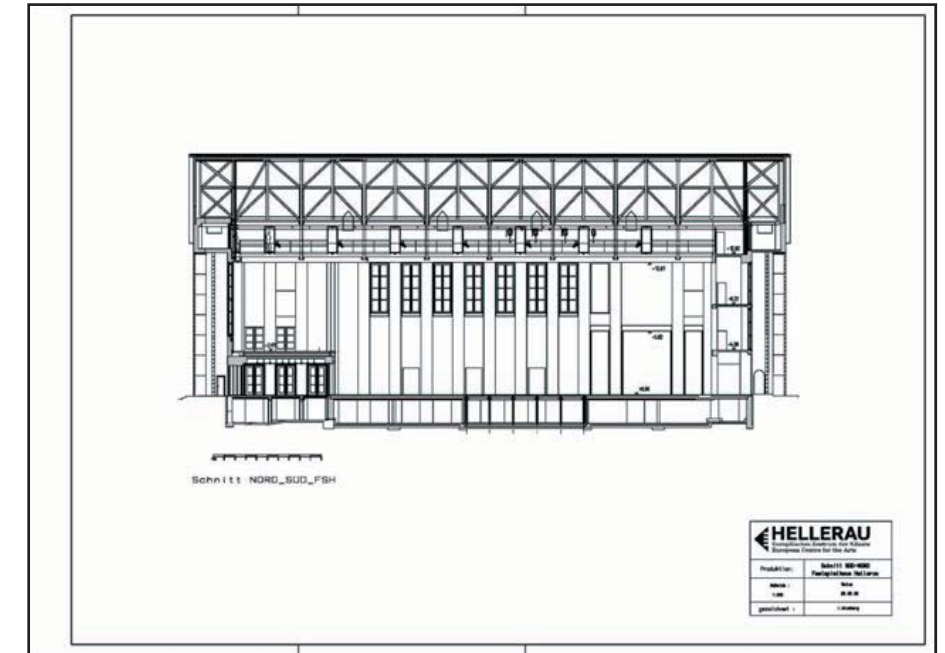
Produktion:	Oberlichtsaal Ost Festspielhaus Hellerau
Maßstab :	Datum
1:125	21.05.08
gezeichnet :	t.blosberg



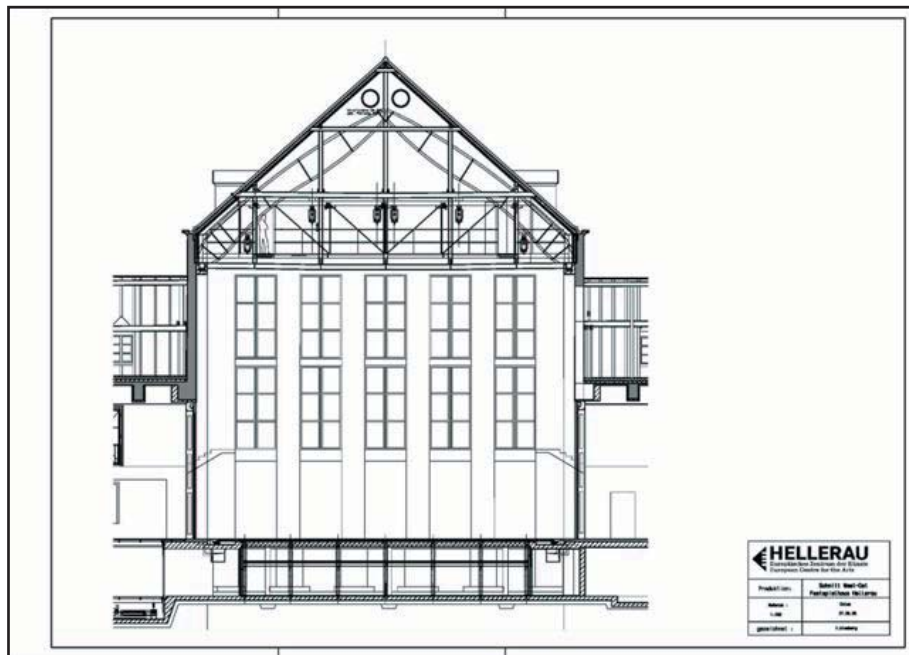
sketches „Großer Saal“ with grid 1 m x 1 m



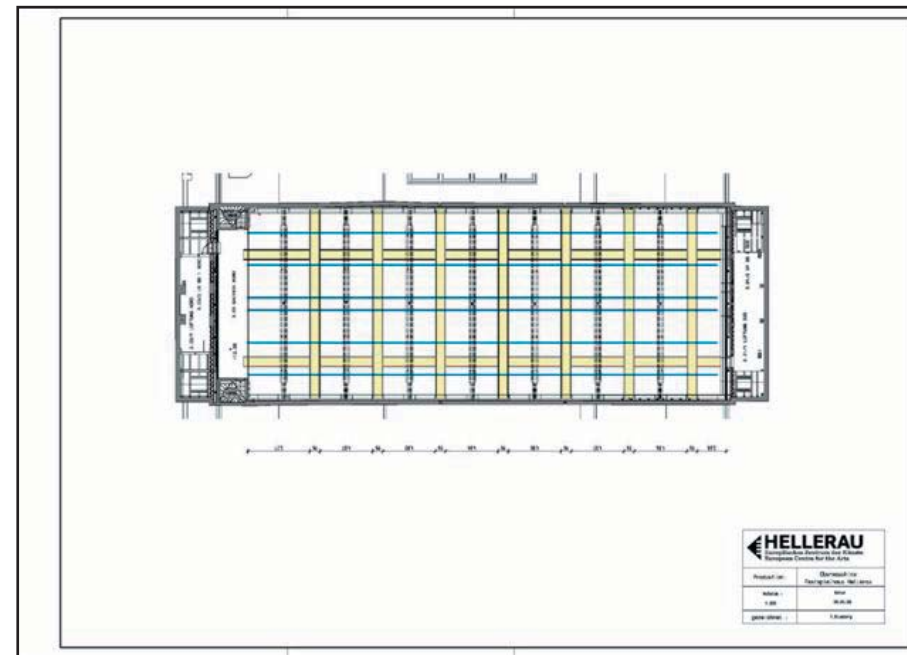
plan ground floor Festspielhaus Hellerau M 1:200 /A3



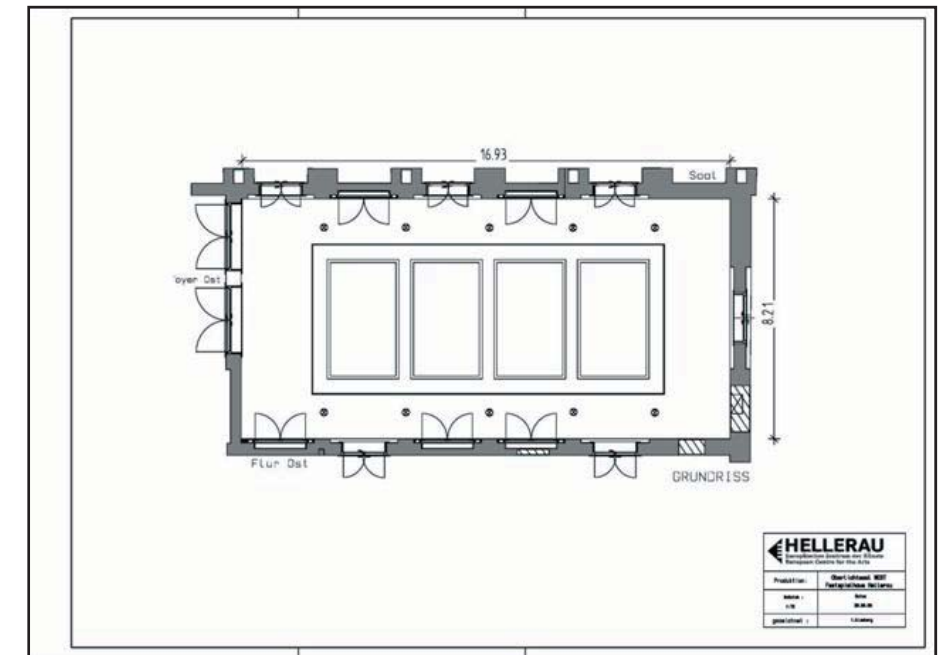
sectional drawing North-South M 1:200 /A3



sectional drawing east-west M 1:100 /A3



ground plot lighting bridges M 1:200 /A3



Grundriss Oberlichtsaal Ost M 1:75 /A3



1 south elevation Festspielhaus Hellerau

Foto: Seidel



2 main hall-view from south gallery

Foto: Seidel



3 main hall-scenical area

Foto: Rous



4 main hall- north wall

Foto: Seidel



5 main hall-view from north-east

Foto: Seidel



6 main hall-side stage east

Foto: Seidel



7 main hall- view of east wall

Foto: Seidel



8 main hall-view from north

Foto: Seidel



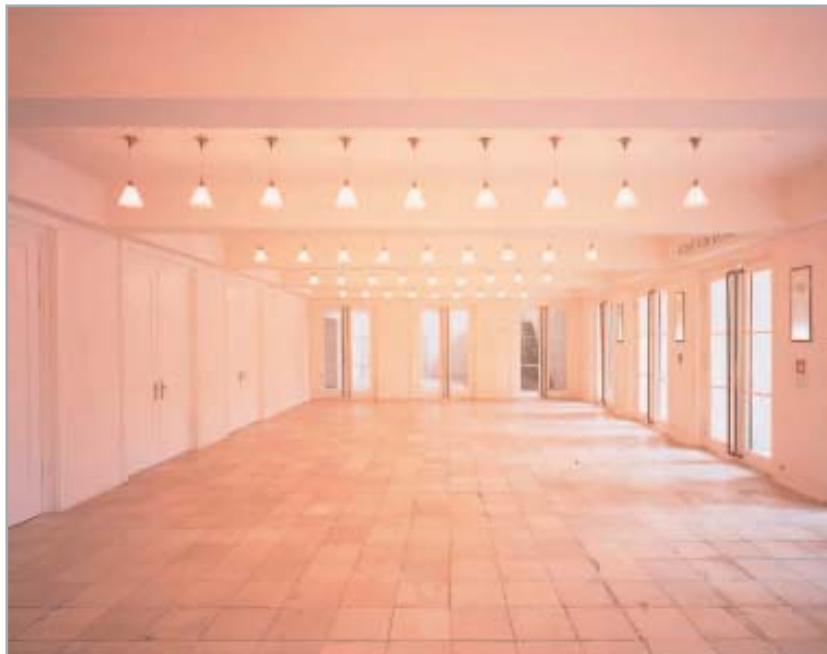
9 main hall-south gallery

Foto: Seidel



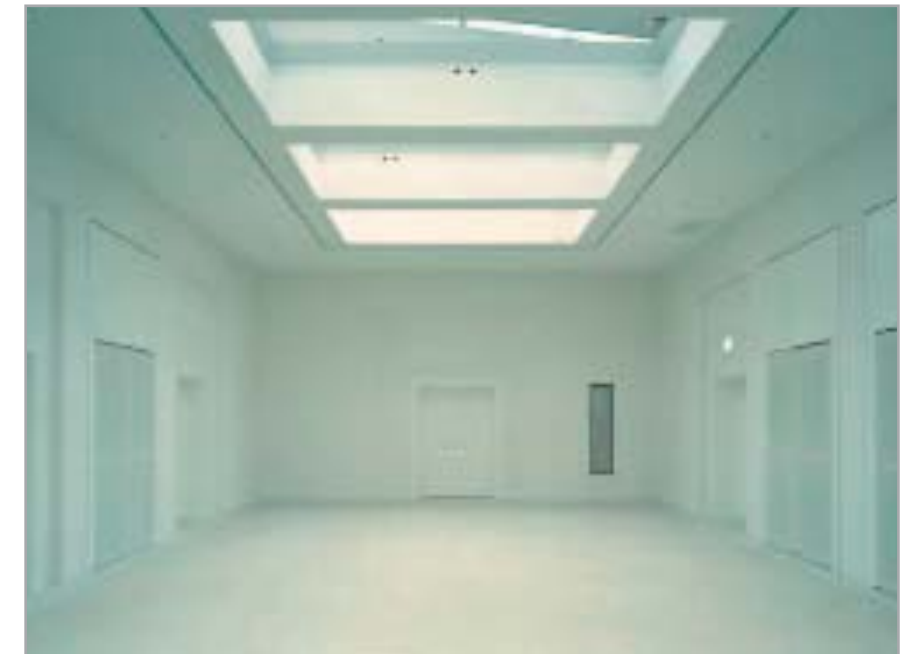
10 main hall-south gallery;

Foto: Seidel



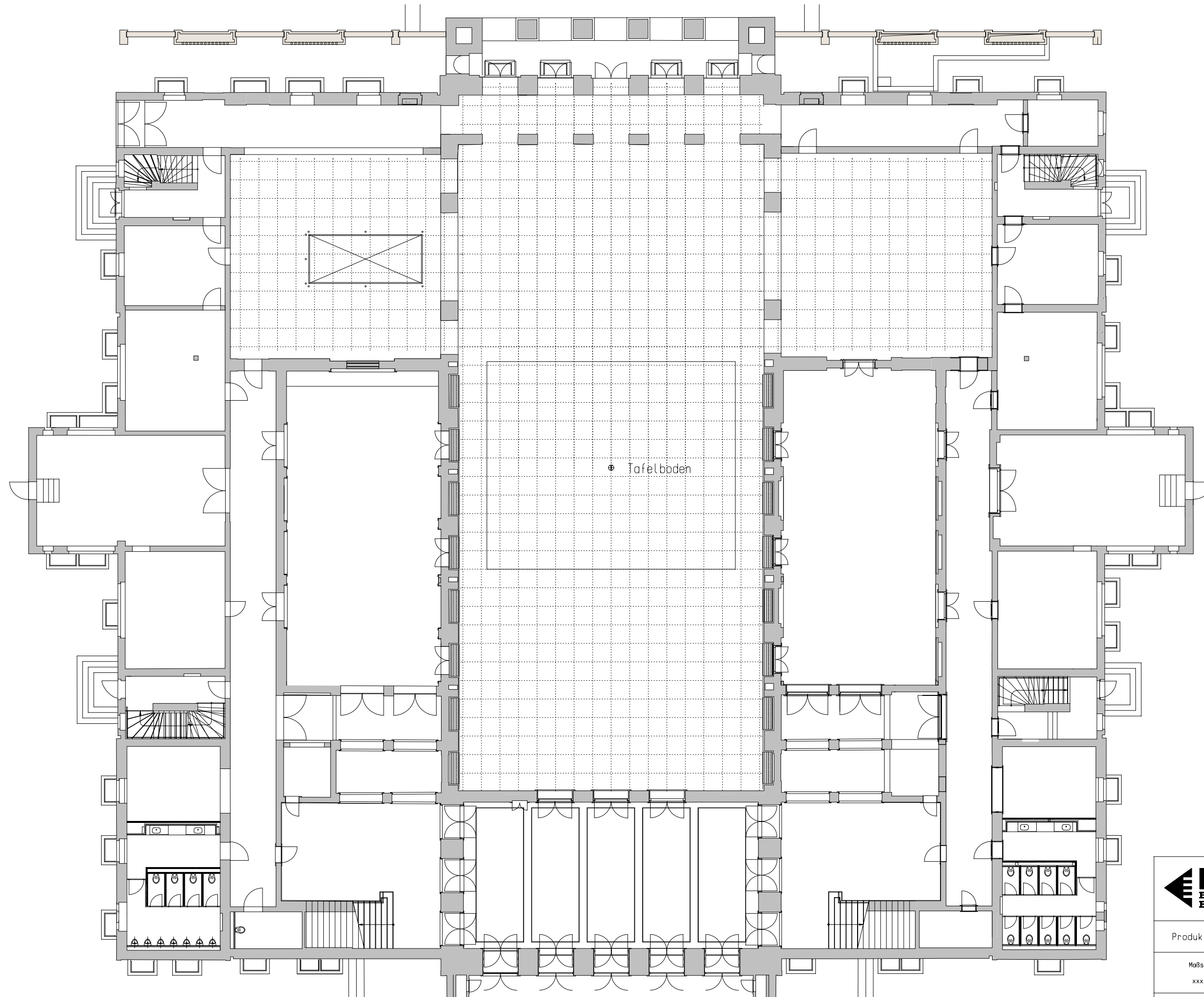
11 south foyer Festspielhaus Hellerau

Foto:Seidel

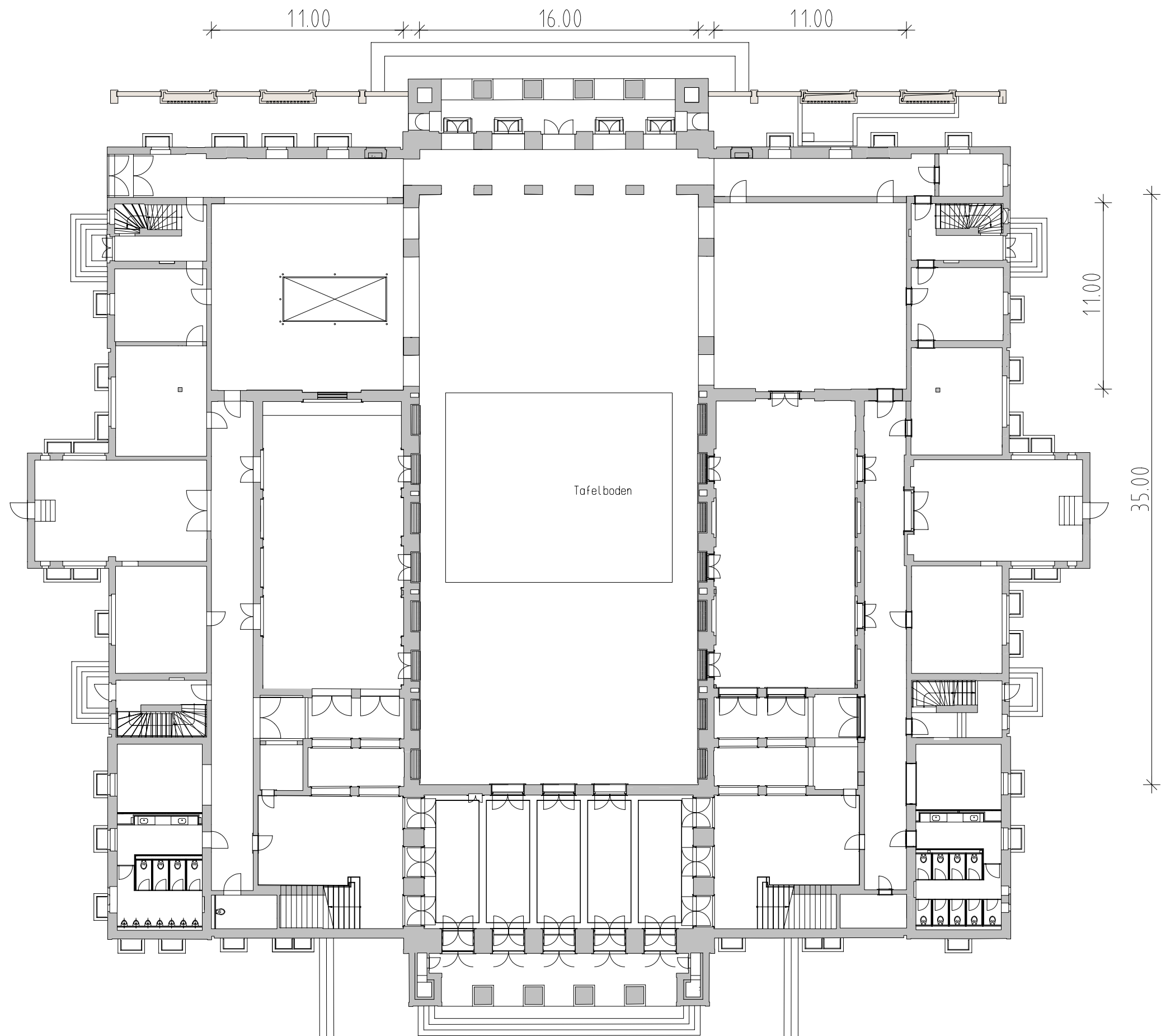


12 Oberlichtsaal Ost Festspielhaus Hellerau

Foto: Seidel

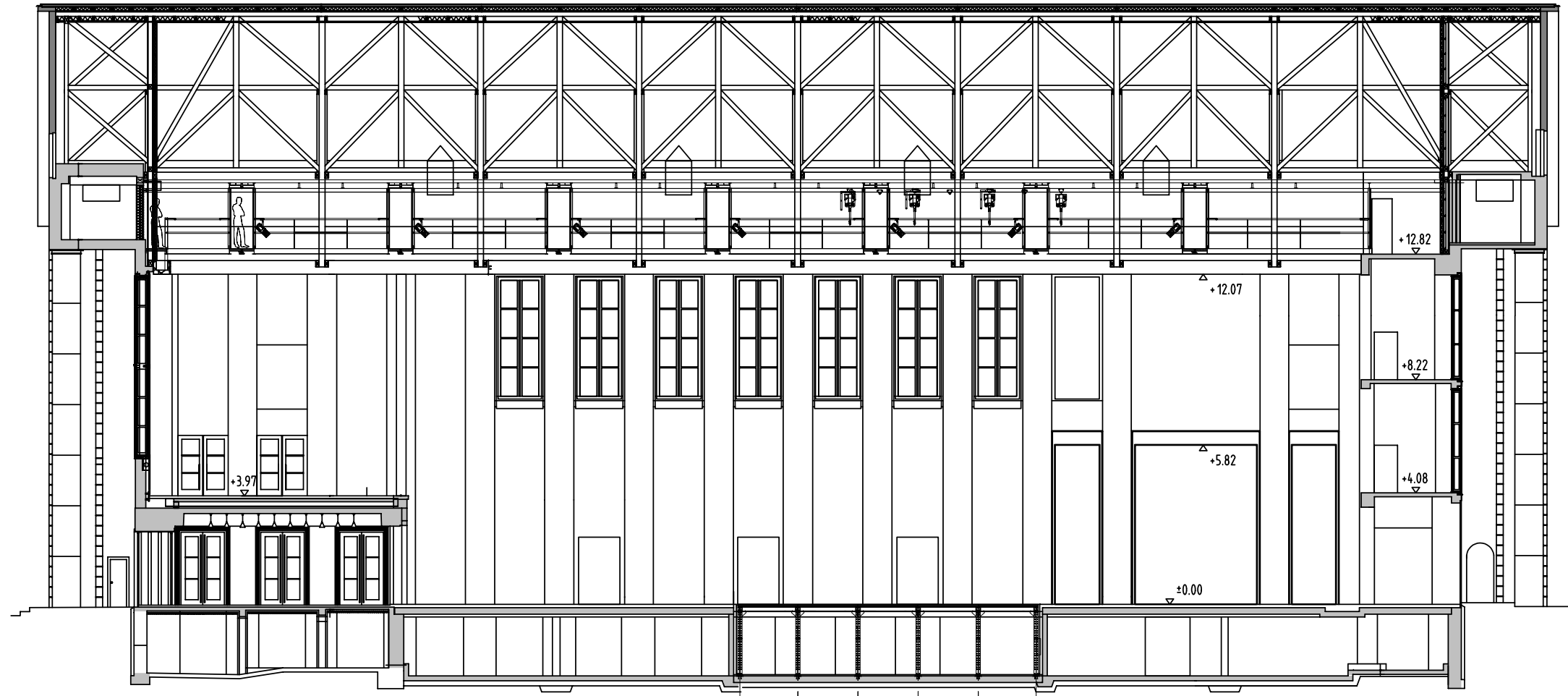


Produktion:	Skizzenblatt 1m Raster Festspielhaus Hellerau
Maßstab : xxxx	Datum 27.05.08
gezeichnet :	t.blosberg



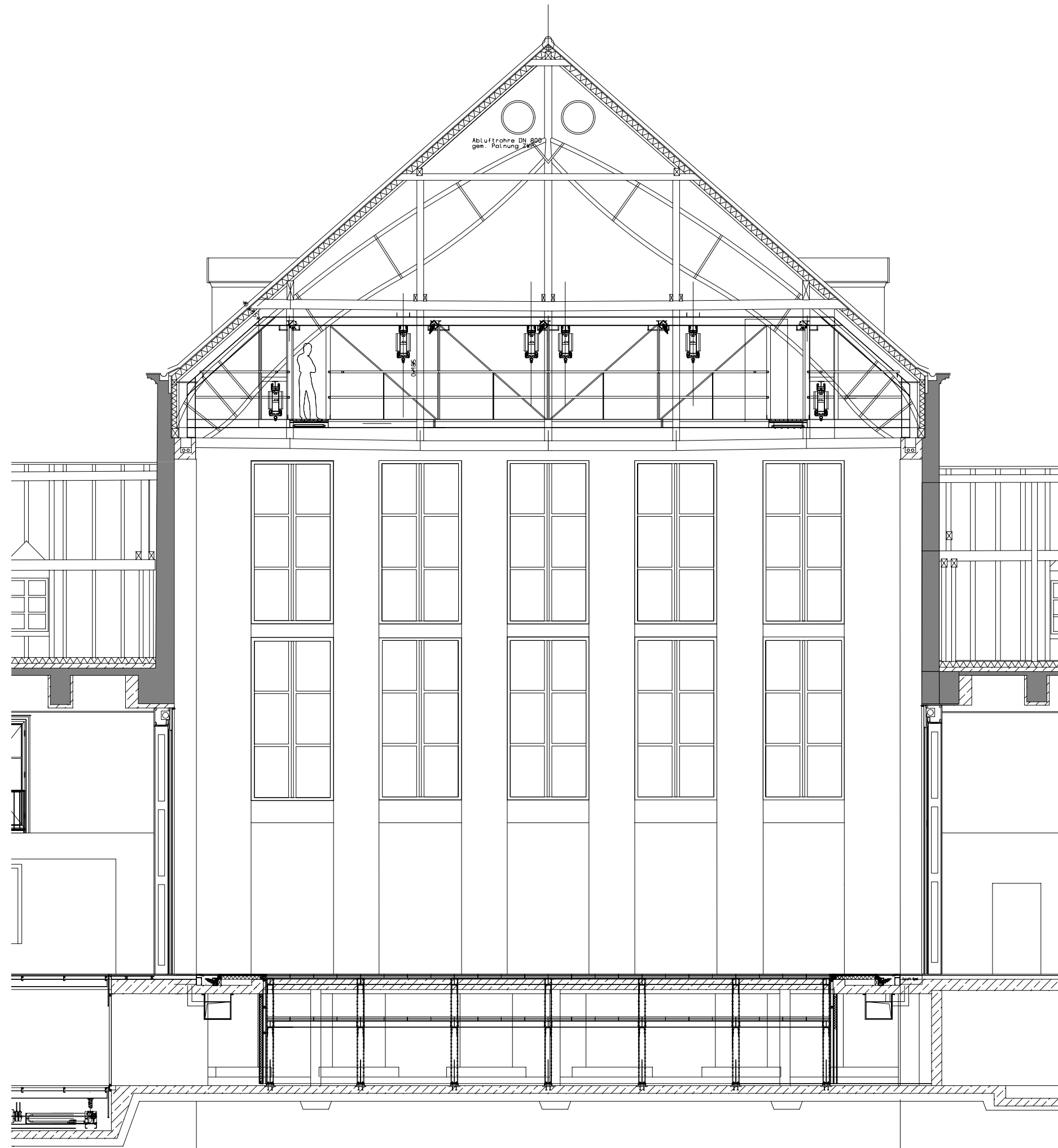
HELLERAU
 Europäisches Zentrum der Künste
 European Centre for the Arts

Produktion:	Grundriss Erdgeschoss Festspielhaus Hellerau
Maßstab : 1:100	Datum 17.05.2008
gezeichnet :	t.blasberg



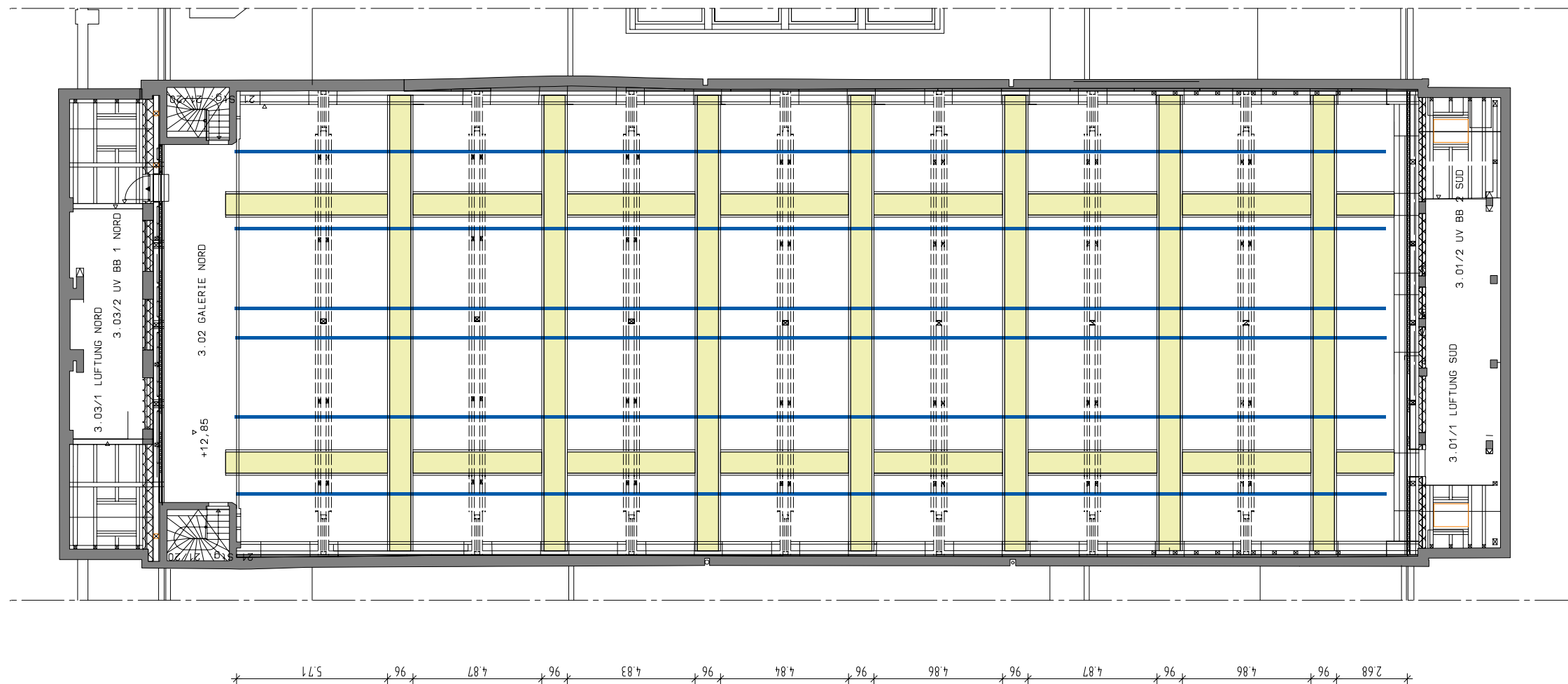
Schnitt NORD_SUD_FSH

 Europäisches Zentrum der Künste European Centre for the Arts	
Produktion:	Schnitt SUD-NORD Festspielhaus Hellerau
Maßstab : 1:200	Datum 26.05.08
gezeichnet :	t.blasberg

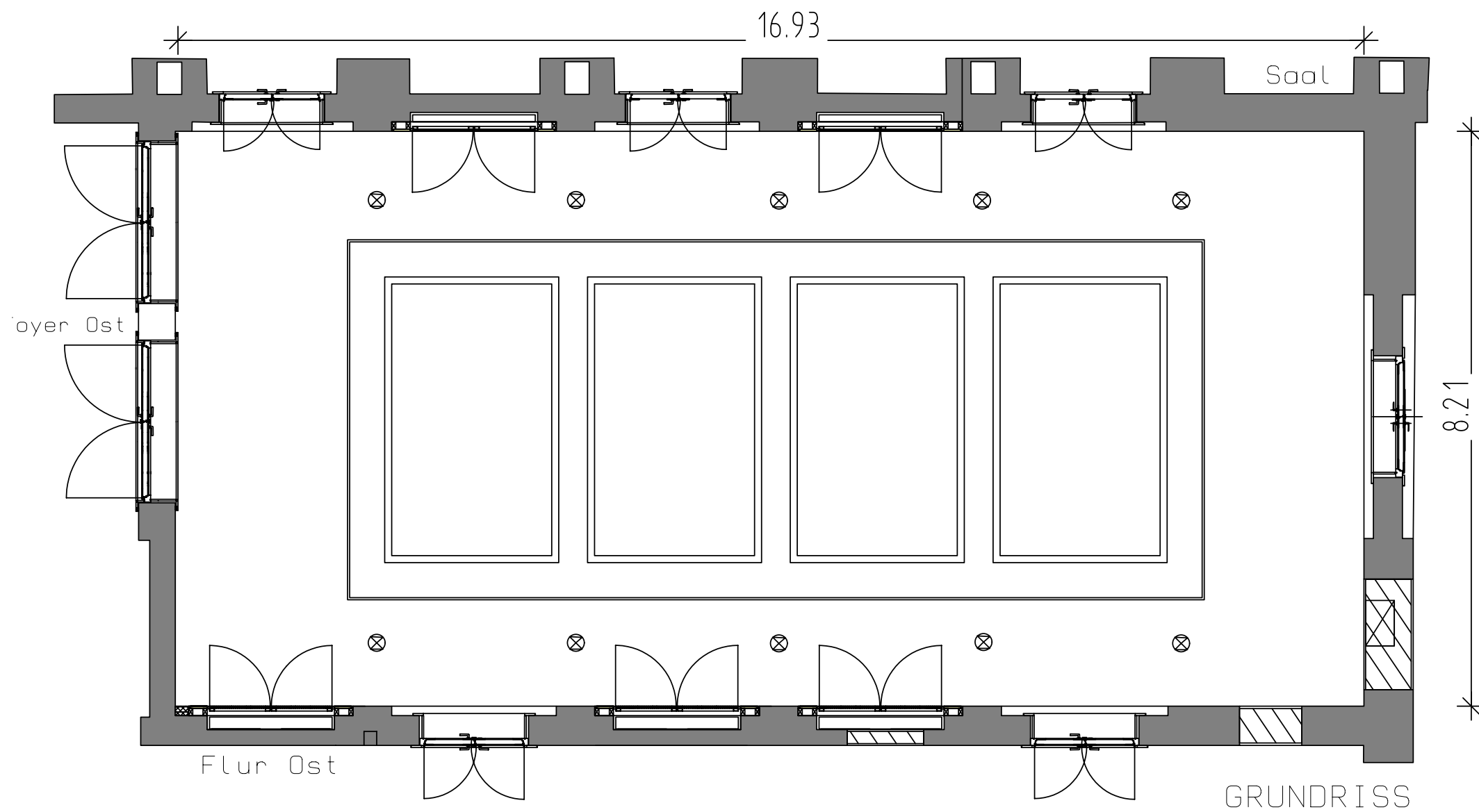



HELLERAU
Europäisches Zentrum der Künste
European Centre for the Arts

Produktion:	Schnitt West-Ost Festspielhaus Hellerau
Maßstab : 1:100	Datum 27.05.08
gezeichnet :	t.blasberg



Produktion:	Obermaschine Festspielhaus Hellerau
Maßstab : 1:200	Datum 26.05.08
gezeichnet :	t.blasberg



 HELLERAU Europäisches Zentrum der Künste European Centre for the Arts	
Produktion:	Oberlichtsaal WEST Festspielhaus Hellerau
Maßstab : 1:75	Datum 26.05.08
gezeichnet :	t.blasberg