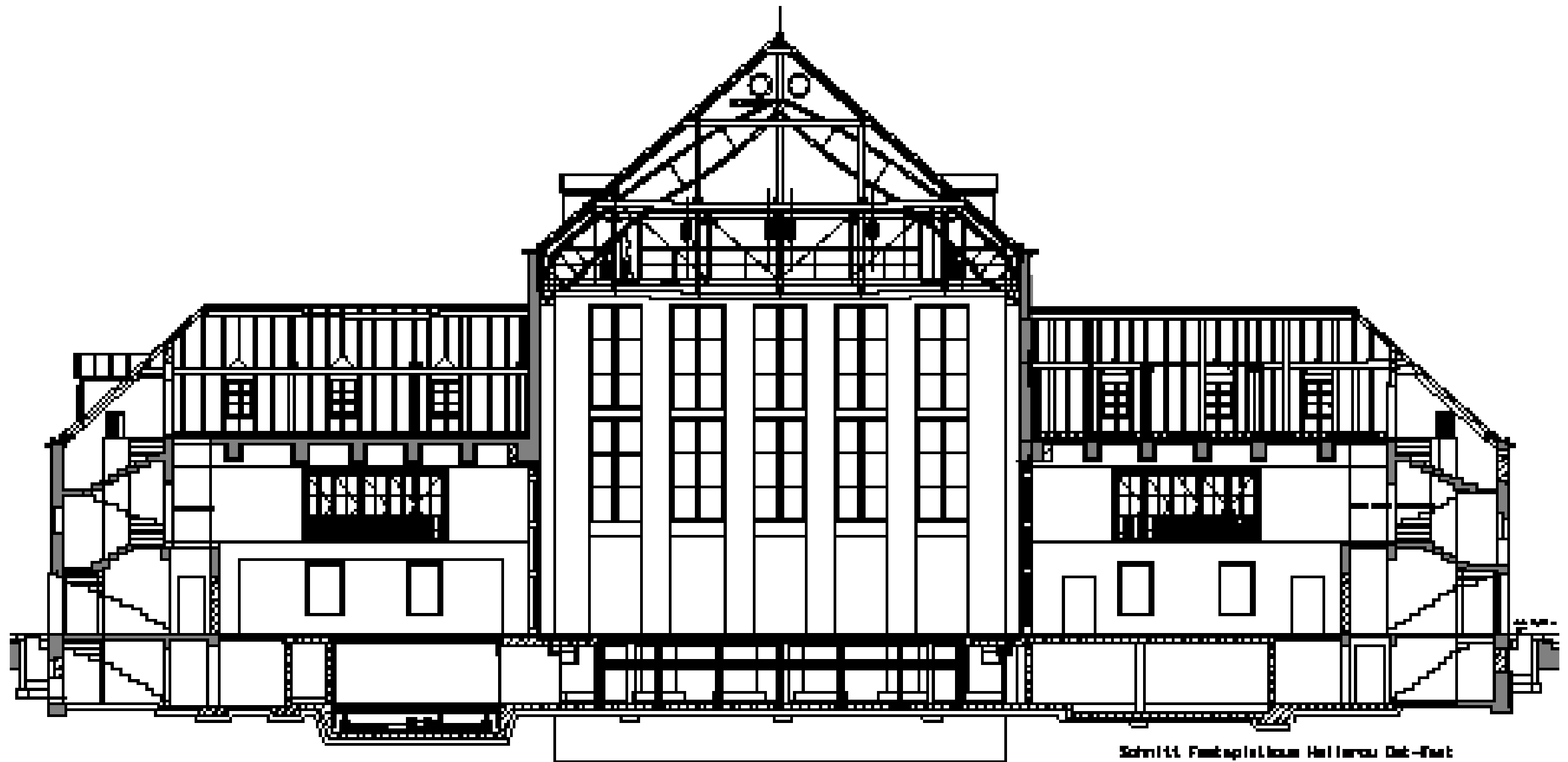


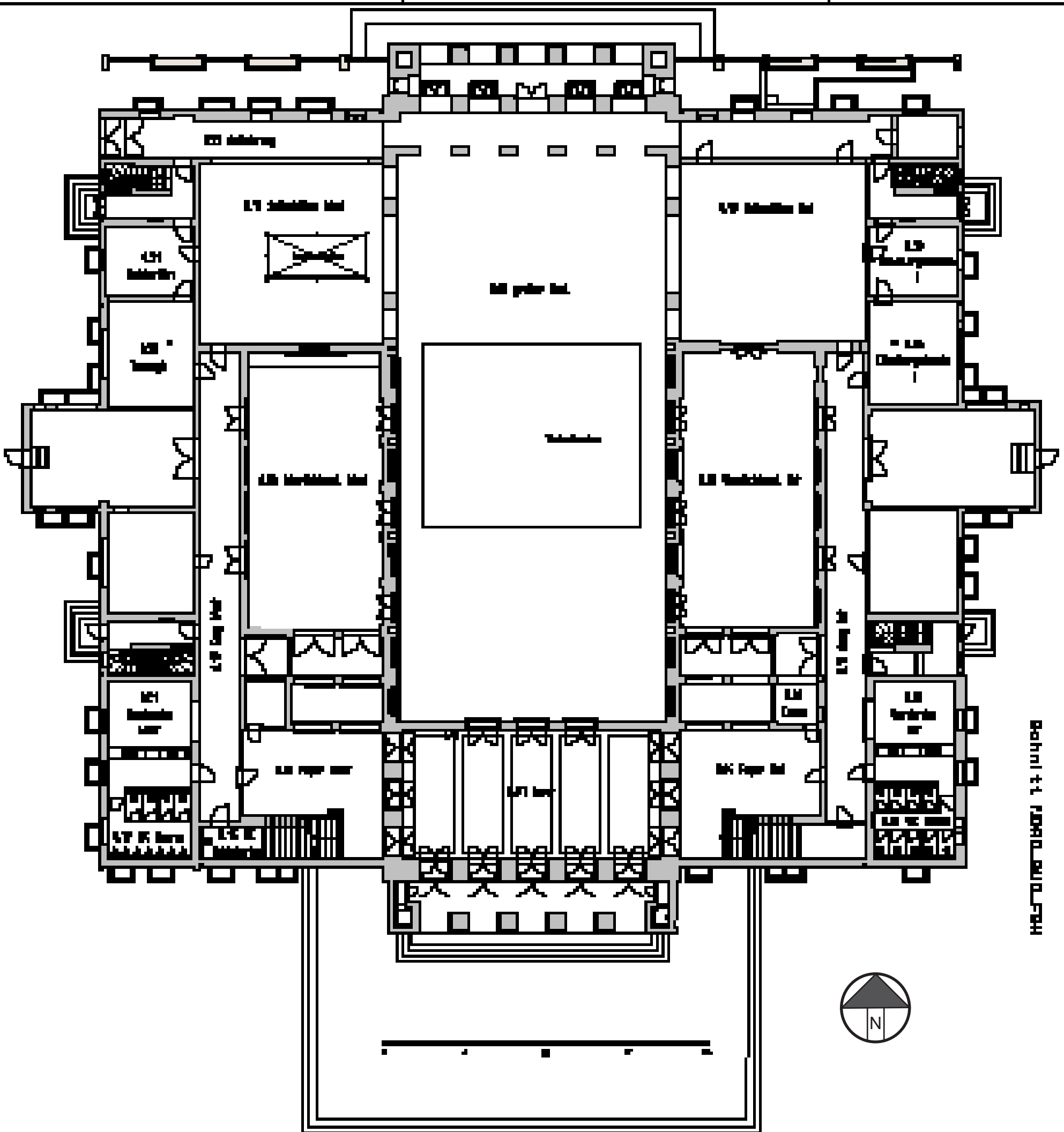
FESTSPIELHAUS HELLERAU



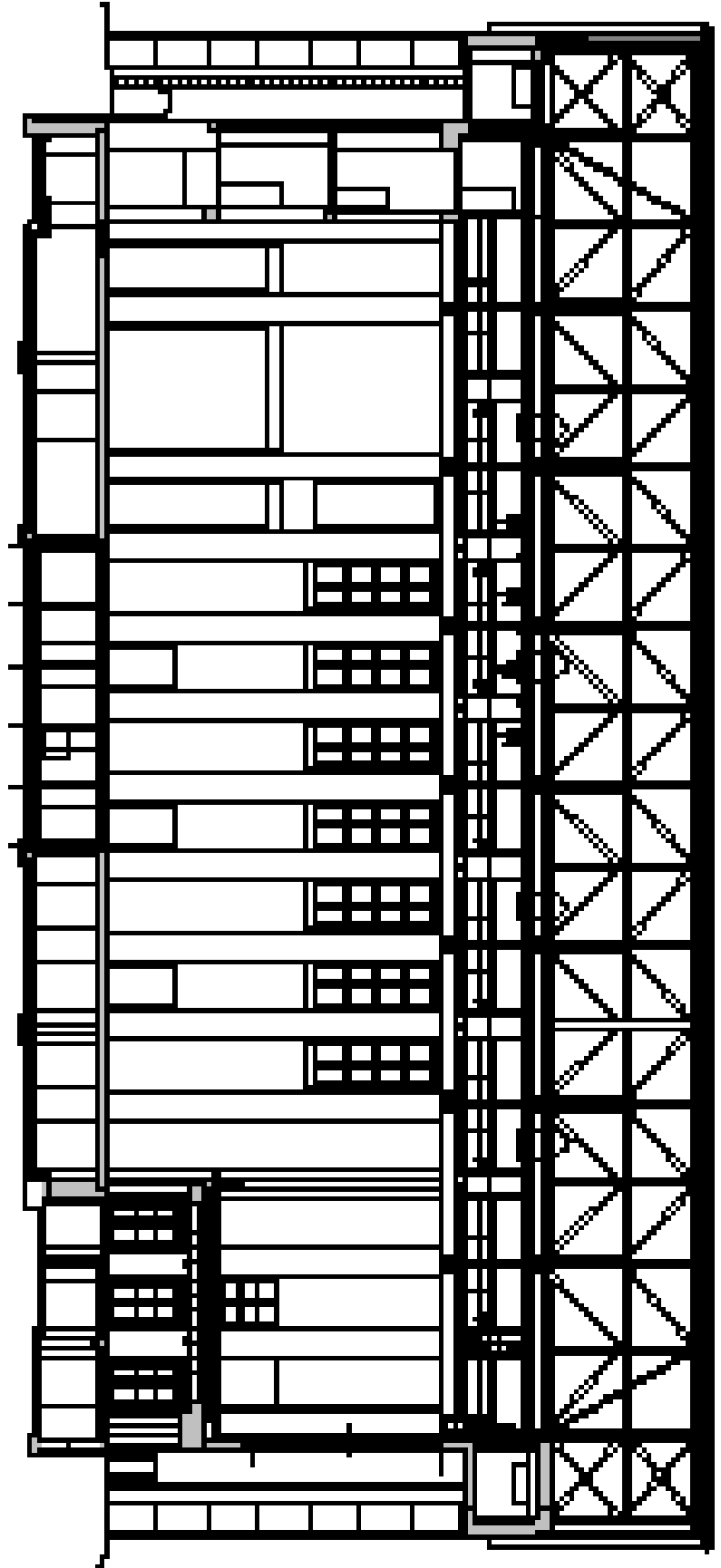
Schnitt Festspielhaus Hellerau Ost-West

HELLERAU Europäisches
Zentrum der Künste
European
Centre for the Arts

Technische Informationen / Technical Information



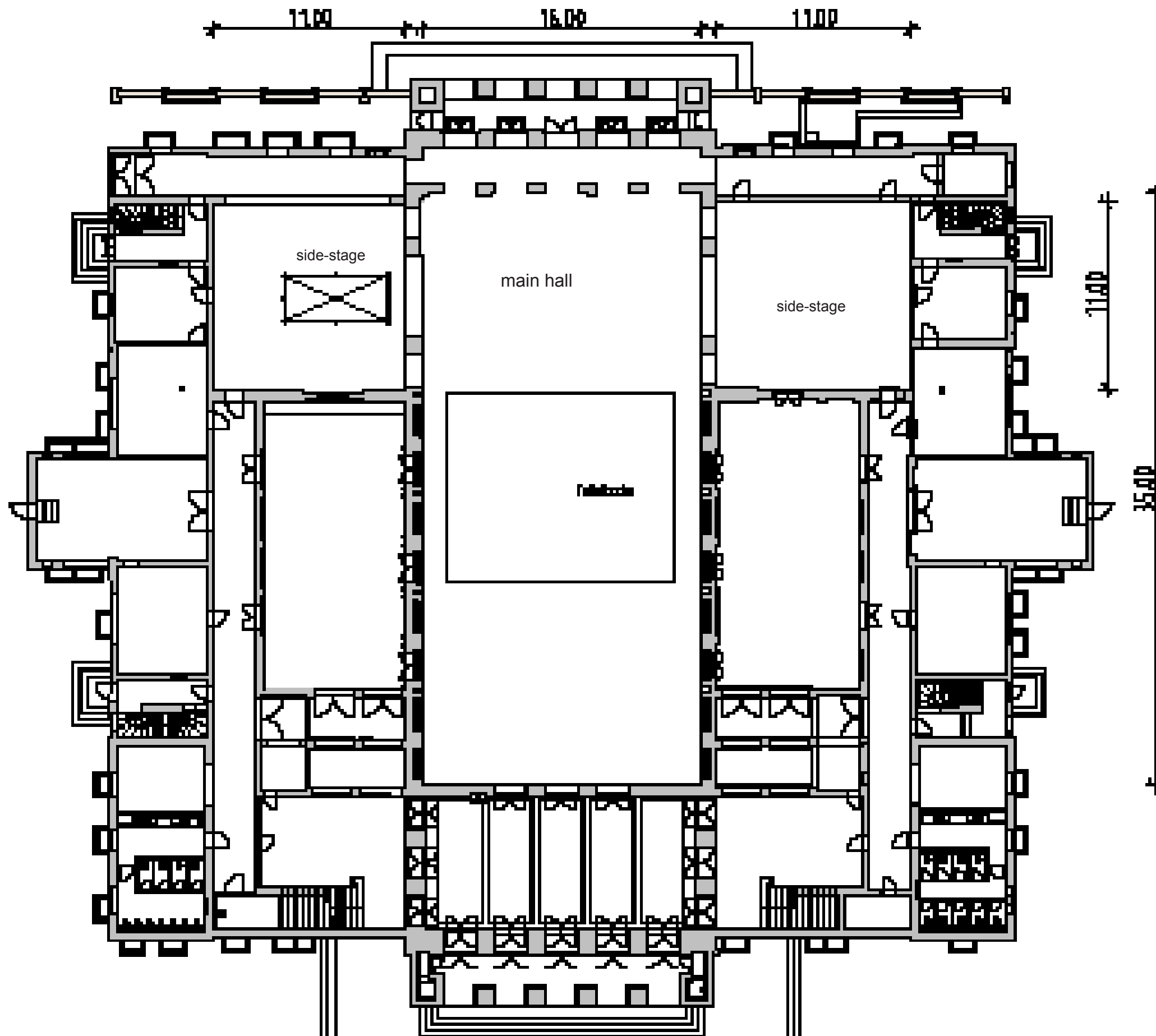
Bahn + 1. FLOOR AUFSTUFG



HELLERAU

Projekt Nr.:	MSP - Hellerau, 1987 F. S. J. Hellerau, Hellerau
Arch.:	F. S. J.
Struktur:	J. S.

Zeichnungsvorlage MSP - München



Main hall

scenical areas:

The main hall is composed out of two areas.

1. footprint on ground floor 34.50m x 16.50m/+0.00m
2. south gallery 9.00m x 16.50m /+4.05m

Centered in the base area on the ground floor is a mobile tile-floor-system with a size of 11.00m x 13.50m. Opening this system allows for exit/entry-situations, transformations or an orchestra pit.

Possibility of lowering to -2.30m.

At regular seating the scenical area has size of about 16m width and 20m depth.

(for precise measurements see blueprint of the stage)

To the left and right side of the main stage are side-stages with a floor space of 11.00m x 11.00m (see ground plan and photo)

HELLERAU

Projektion:	Grundriss im Erdgeschoss
Maßstab:	1:100
Zeichnungsdatum:	1970

technical areas:

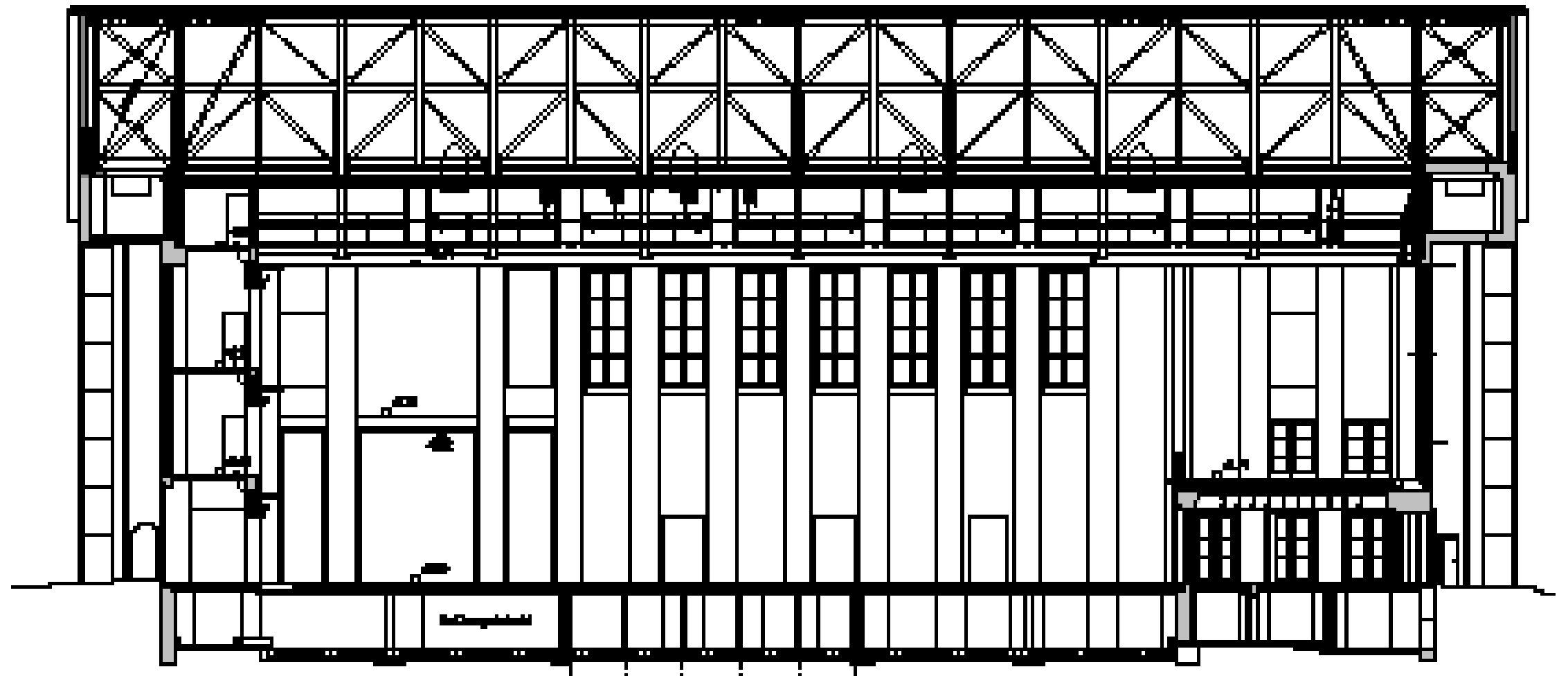
The main hall consists of 3 technical layers

- I. main hall/stage floor
- II. lighting bridges
- III. railsystem for cranes

III. railsystem for cranes +15.00 m

II. lighting bridges +12.50 m

I. main hall/stage floor +0.00 m



I. Main hall and floor

The whole floor of the main hall consists of Oregon – Pine wooden stage-floor. This Oregon-Pine-surface is glued together with a multi-layered wooden plate of 36mm thickness. In the case of connections into the stage floor it is not allowed to anchor below 45mm to prevent the damage of cables beneath the stage floor.

The maximum stress of the main floor is 5 kN to 7.5 kN per m². Exceeding this limit needs to be arranged with the theater administration.

On the outside margin is a 40cm wide, folding cable tube with connections to be used by the light-, sound- and media-department. The outlets for fresh air are located between the columns of the northern wall responsible for the ventilation of the main hall. (maximum stress on the ventilation grill is 1.5 kN per m²)

In the center of the main Hall (see plan of stage) a floor-tile-

system with a base of 13m x 11m is located. Each tile consists of multi-layered plates with an Oregon-Pine-surface. The plate-grid is 2.20m x 0.55m and is free to open arbitrarily.

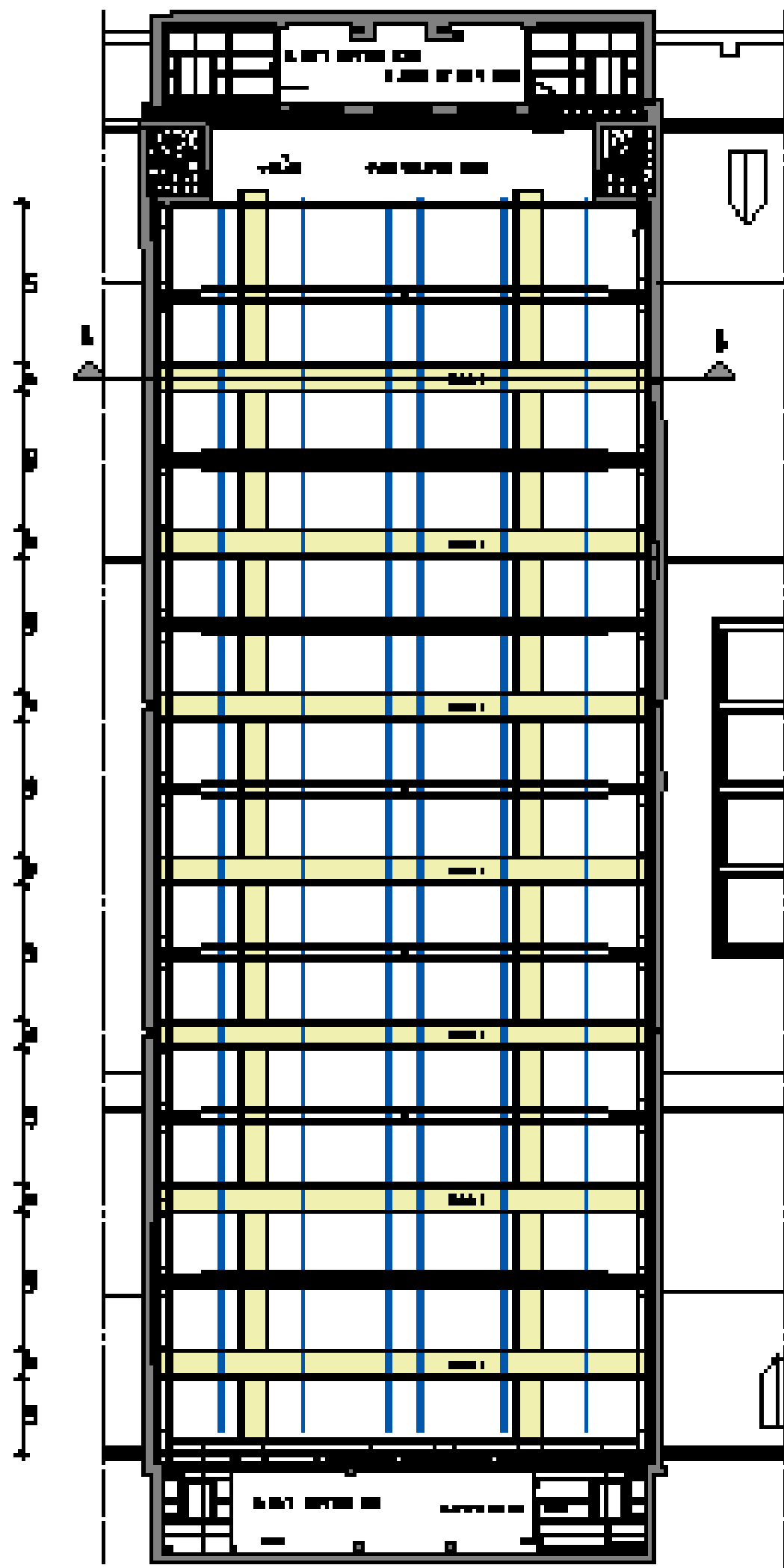
II. Lighting bridges

All lighting bridges are only to be used by instructed personnel. The railing consists of pipes with a diameter of 48.3mm and a wall tubing of 3mm, allowing for a point load of 0.5 kN per meter. The uppermost part of the railing is twofold and placed at 14m height. Multiple connections for all departments are located on the catwalks.

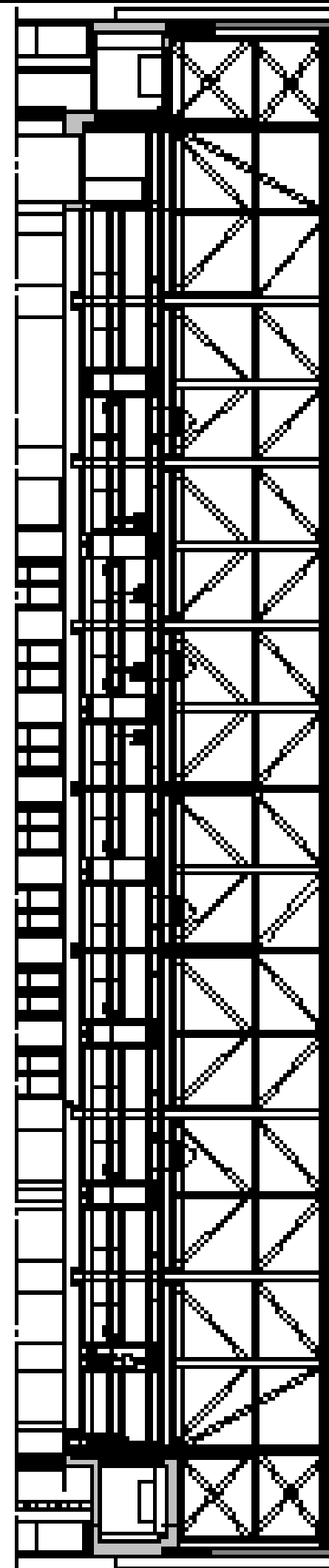
III. Railsystem for rigging/ lifting

A loading bus system (for decoration, truss, lighting- or soundequipment, etc) is located above the gangway. These 6 rails run lengthwise through the main hall with a spacing of about 3m for dollies with individually controllable hoists, which can be assigned freely to all rails. The two rails in the middle are constructed with a spacing of 80cm.

At this time the rigging-system is equipped 8 ASM steel band hoist p 250 TH Servo (BGV C1) and 4 ASM-chainhoists OTTO 500 (BGV C1).



Hoist mit Rollwagen für Parkhaus Halle für rollende Montage of the hoist

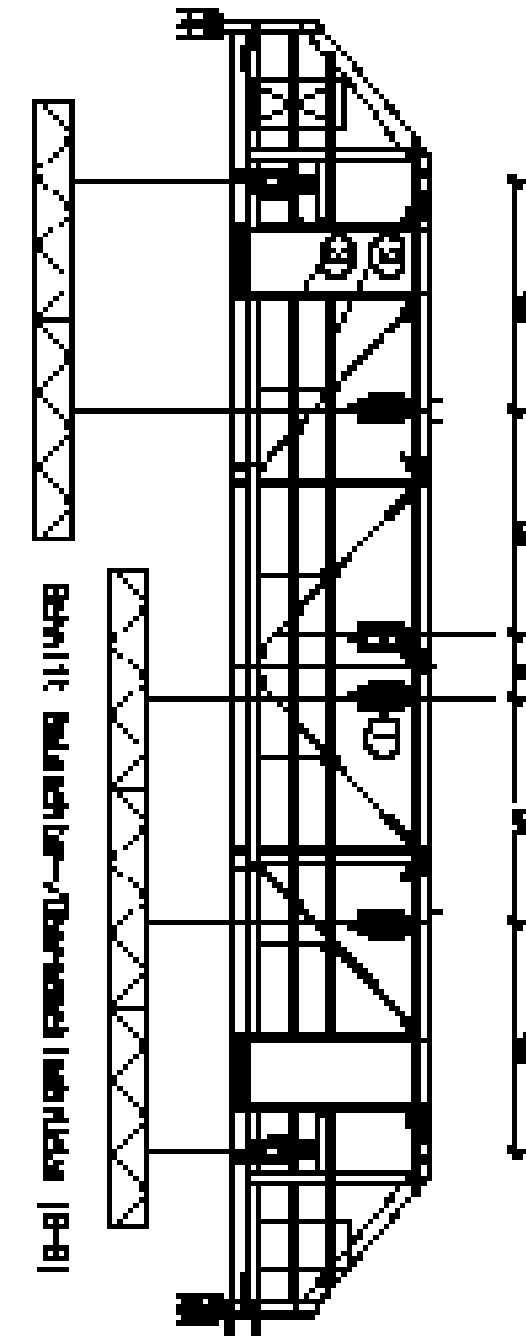


Technical data ASM steel band hoist P 250

- maximum load 2.5 kN
- speed continuously adjustable between 0.06 to 12m/min
- path-time-measurement
- load measurement

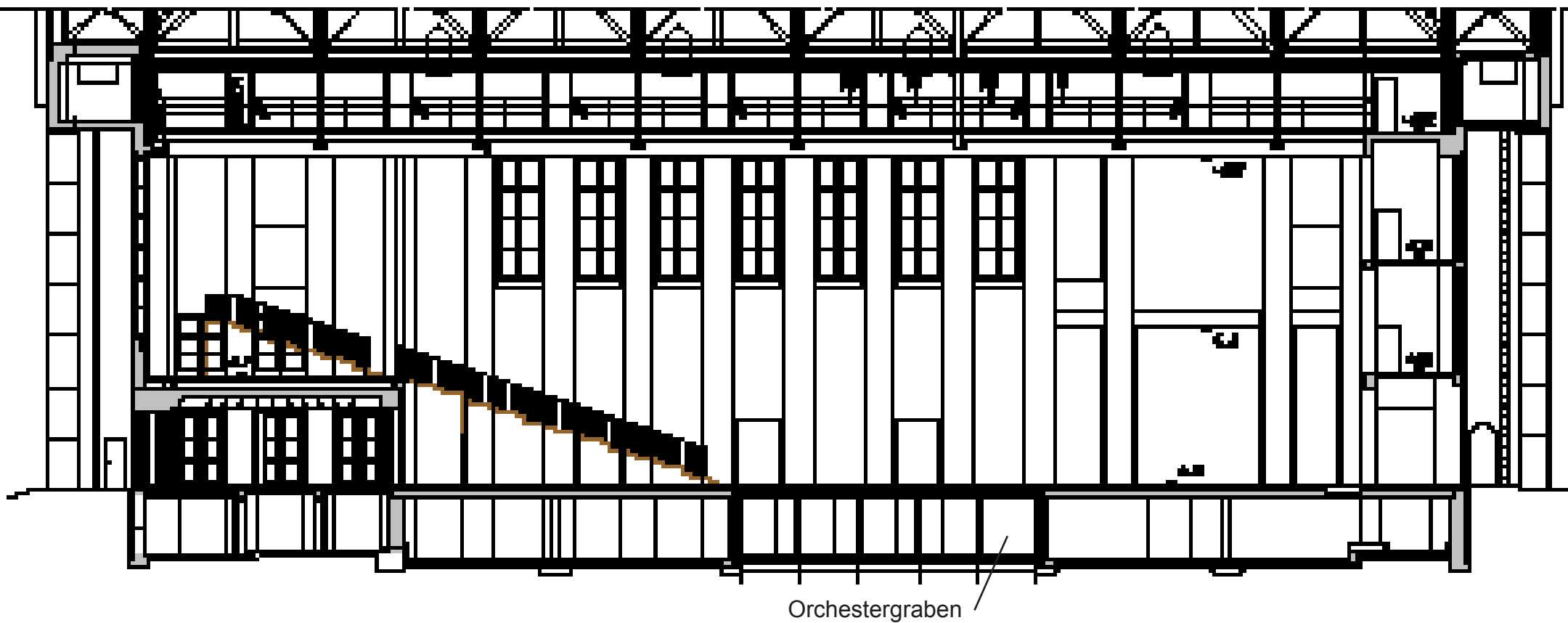
Technical data ASM chain-hoist 500 BGC C1 :

- maximum load 5.0 kN
- speed 4m/min



- ① Gehäuse mit Rollwagen für Parkhaus Halle für rollende Montage of the hoist
- ② Handlaufgrate
- ③ Kabinenflur für Light or other load

HELLERAU	
PROJEKT NR. :	Bestandteilzeichnung des Parkhaus Hoists
BLATT NR. :	1
ZEICHNUNG NR. :	111111



Orchestergraben

Bohnitt NORD-SÜD-FGH



Basic equipment Festspielhaus Hellerau

The basic configuration of equipment of the Festspielhaus Hellerau is mobile and flexible. The lighting asset features a main- and emergency-control along with additional consoles. The FOH-position can be adjusted to the different seating situations as the sound department, for example, features a grid of digital connections making it flexible/mobile.

The 4 main departments:

stage

- set building
- rigging
- workshop

lighting department

sound-/media-department

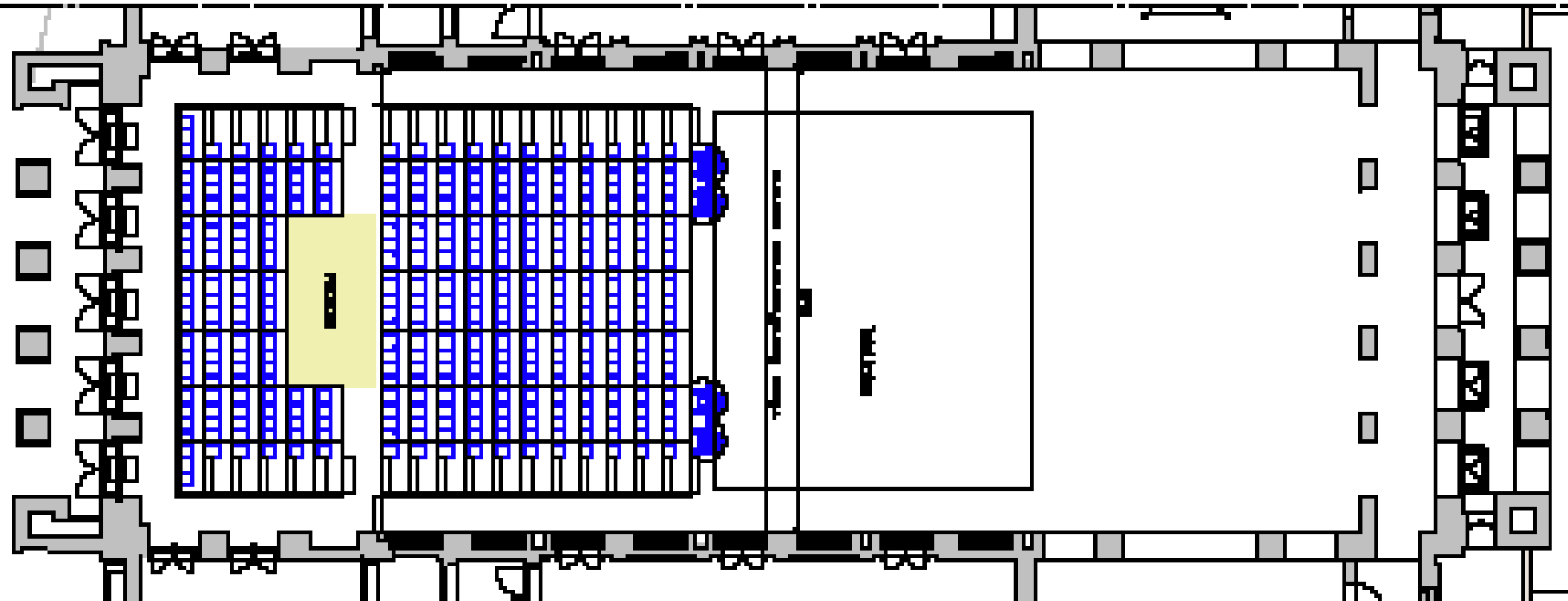
- sound
- media/networking
- video
- recording
- building services

·house-inspection

- (emergency)power supply
- air-conditioning/heating
- evacuation-/emergencysystems

The following lists contain excerpts of the basic equipment.

A wide selection of equipment can be achieved through a network with other theaters and rental agency for event equipment.



HELLERAU

Produktlinie I	Produktlinie II
Produktlinie I	Produktlinie II
Produktlinie I	Produktlinie II
Produktlinie I	Produktlinie II

lighting:

Group	Manufact.	Designation	Count
spotlight	Lucifer	Flood symmetrical 1kW Lucifer	12
spotlight	Lucifer	Flood a-symmetrical 1kW	16
spotlight	Robert Juliat	Halogen Plan-Convex Spotlights 1,000W RJ	11
spotlight	Robert Juliat	Halogen Plan-Convex Spotlights 2,000W RJ	20
spotlight	ARRI	Halogen fresnel light 650 W ARRI	10
spotlight	Robert Juliat	Halogen fresnel light 1,000W RJ	9
spotlight	Robert Juliat	Halogen fresnel light 2,000W RJ	16
spotlight	Strand	Halogen fresnel light 5,000W Strand	6
spotlight	ARRI	Halogen fresnel light 5,000W ARRI	5
spotlight	TAL	PAR 36 (PIN Spot)	39
spotlight	ETC	PAR-spotlight HPL 750W ETC	25
spotlight	TAL	PAR 56	8
spotlight	TAL	PAR 64	20
spotlight	ETC	Profile spotlight, fixed focal length 5° ETC	2
spotlight	ETC	Profile spotlight, fixed focal length 10° ETC	2
spotlight	ETC	Profile spotlight, fixed focal length 19° ETC	10
spotlight	ETC	Profile spotlight, fixed focal length 26° ETC	13
spotlight	ETC	Profile spotlight, fixed focal length 36° ETC	11
spotlight	ETC	Profile spotlight, fixed focal length 50° ETC	7
spotlight	Robert Juliat	Zoom-profile spotlight 2.000 W, 15°-40° RJ	16
spotlight	Strand	HMI fresnel light 2,500W Strand	8
spotlight	Robert Juliat	HMI Zoom-profile spotlight 2,5kW 18° - 38° RJ D`artagnau	6
spotlight	TAL	Flourescent light adjustable 1x 58W	33
control		Lighting console grandMA light	1
control		converter, Ethernet to DMX, mobil	1
control		converter, DMX to Ethernet, mobil	1
effects	UNIQUE	Hazer UNIQUE	1
Effects	TAL	mirror ball d=50 cm +motor	1
Spotlight accessoires		Rainbow colorchanger 12`pro	6
dimmer Cannel(dips)	ETC	3 kW	160
dimmer Cannel(dips)	ETC	5 kw	17
dimmer Cannel(dips)	ETC	Flourescent / 5 kW	10
dimmer Cannel(dips)	ETC	No Dimm	28

stage

Group	Manufact.	Designation	count
Platform	Noviflex	2.000 mm x 1.000 mm with plug and telescopic-leg, wooden surface (Oregon-Pine)	162
platform	Noviflex	1.000 mm x 1.000 mm with plug and telescopic-leg, wooden surface (Oregon-Pine)	2
platform	Noviflex	2.000 mm x 1.000 mm with plug and telescopic-leg, for outdoor use - 21mm dark brown water resistant board with 750kg maximum load	72
hoist	ASM	steel band hoist ASM P-250 TH servo BGV C1	8
hoist	ASM	chain hoist ASM OTTO 500 BGV C1	4
hoist	Stagemaker	chain hoist Stagemaker 250 kg BGV D8	8
work platforms	Genie	aerial work platforms , (battery operation) max 14m height	1
floor		Spring floor mobile - plate 1,4 m x 0,7 m	435
floor		Spring floor mobile - plate 0,7 m x 0,7 m	51
Dance floor/marley		black	
Dance floor/marley		white	
Dance floor/marley		grey	
Truss/Rigging	Prolyte	Truss 290 x 290mm 4-point 1,0m length H30V	10
Truss/Rigging	Prolyte	Truss 290 x 290mm 4-point 2,0m length H30V	10
Truss/Rigging	Prolyte	Truss 290 x 290mm 4-point 4,0m length H30V	22
Truss/Rigging	Prolyte	Corner piece, 90° for 4-point truss H30V	6
Truss/Rigging	Prolyte	Box-Corner H 30 V	10
Truss/Rigging	Prolyte	Ground plate H 30 V	4
Truss/Rigging	Prolyte	Truss H 40 V l= 2 m	4
Truss/Rigging	Prolyte	Truss H 40 V l= 3 m	4
Truss/Rigging	Prolyte	Truss H 40 V l= 4 m	10
Truss/Rigging	Prolyte	Box-Corner H 40 V	4
curtain		velvet black 12m x 3m	9
curtain		velvet black 12m x 6m	1
curtain		velvet black 12m x 8m	2
curtain		molleton black 12m x 3m	12

equipment Festspielhaus Hellerau

HELLERAU

sound

Group	Manufact.	Designation	count
Speaker / amp	Meyer Sound	speaker Meyersound UPA-1P	2
Speaker / amp	Meyer Sound	speaker Meyersound UPA-2P	6
Speaker / amp	Meyer Sound	speaker Meyersound UPM-1P	4
Speaker / amp	Meyer Sound	speaker Meyersound UPM-2P	4
Speaker / amp	Meyer Sound	speaker Meyersound CQ-1	2
Speaker / amp	Meyer Sound	Monitor Lautsprecher Meyersound UM-100P	2
Speaker / amp	Meyer Sound	Subwoofer Meyersound USW-1P	4
Speaker / amp	Nexo	speaker NEXO PS10	2
Speaker / amp	Nexo	speaker NEXO PS8.U	4
Speaker / amp	div	Preproduction-systems on request	
Speaker / amp	Axxent	ILM Technology axxent AX2500	3
Mikroport	Sennheiser	Wireless transmitter on request (lavalier, hand-held)	
Mikrofone / D.I.	div.	Microphones on request	div.
Mixer	Yamaha	Digital mixer Yamaha M7CL / 48 im Case	1
Mixer	Yamaha	Digital mixer Yamaha 01V96/2 im Case	1
Mixer	Mackie	1604 VLZ PRO mixer	1
peripherals	div.	Player, effects, peripherals, ...	div.
		Digital multicore system on request	
communication	Motorola	Motorola wireless GM 360 / Rack 3	4
communication	Motorola	Motorola voice radio GP 344, incl. Loading device, power supply	10
communication	Motorola	Intercom-belt-pack, 2-kanalig	4
communication	Motorola	Intercom-belt-pack, 1-kanalig	2
Inductive Höranlagen	Ampetronic	amp ILD9 für Schwerhörigen-Induktivanlagen / Rack 3	2
Inductive Höranlagen	Ampetronic	Induktiv-Testempfänger ILR3	2
Acoustic elements	Rofitec	Schallsegel	18
Acoustic elements	Rofitec	Absorberkissen w= 1,50 m h= 3 m	14

video

Group	Manufact.	Designation	Count
Projectors	Panasonic	Video-Projector 7000 ANSI-LUMEN, SXGA+ Panasonic	1
Lenses	Panasonic	Zoom-lens 2.0 - 3.0:1Panasonic	1
projectors	Eiki	LCD-projector 2000 ANSI-Lumen, XGA LC-XG210.Eiki	1
lenses	Eiki	Zoom-lens 1,8 – 2,5 Ratio Eiki	1
dia-scope	Kodak	Ektapro 5020 Slide Projector	2
lenses	Doctarlux	lense PC 35mm, f/2,8 MC for slide-projector	2
projectors	Kodak	80-fach slide-magazine	2
Projectors	COMM-TEC	80-fach slide-magazine	10
projectors	Medium	Futur10, 600W overhead-projector	1
canvas	Stumpfl	screen 6 x 4 m, o. Perfo, rear projection	1
canvas	Stumpfl	screen 4 x 3 m, o. Perfo, rear projection	1
canvas	Stumpfl	screen 3,10 x 2,35 m, front projection	2
canvas	EZKH	Special sizes on request	div
Video accessoires	div.	Player, mixer, cameras, effects, ... on request	

Oberlichtsaal Ost:

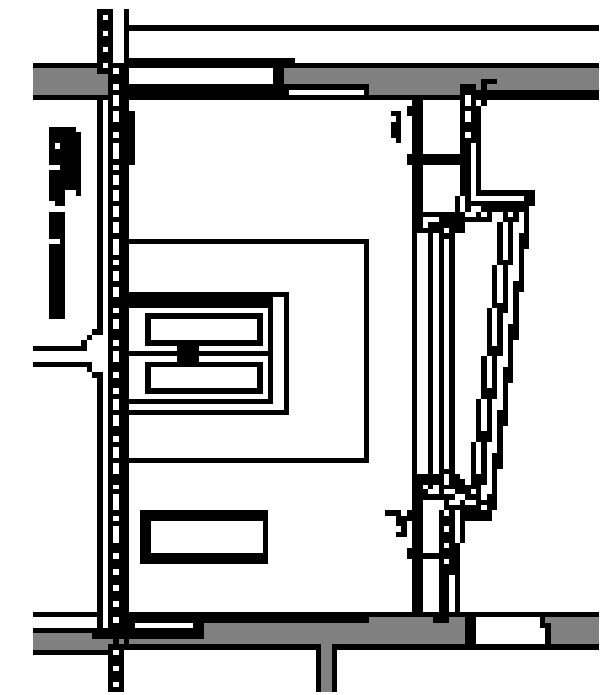
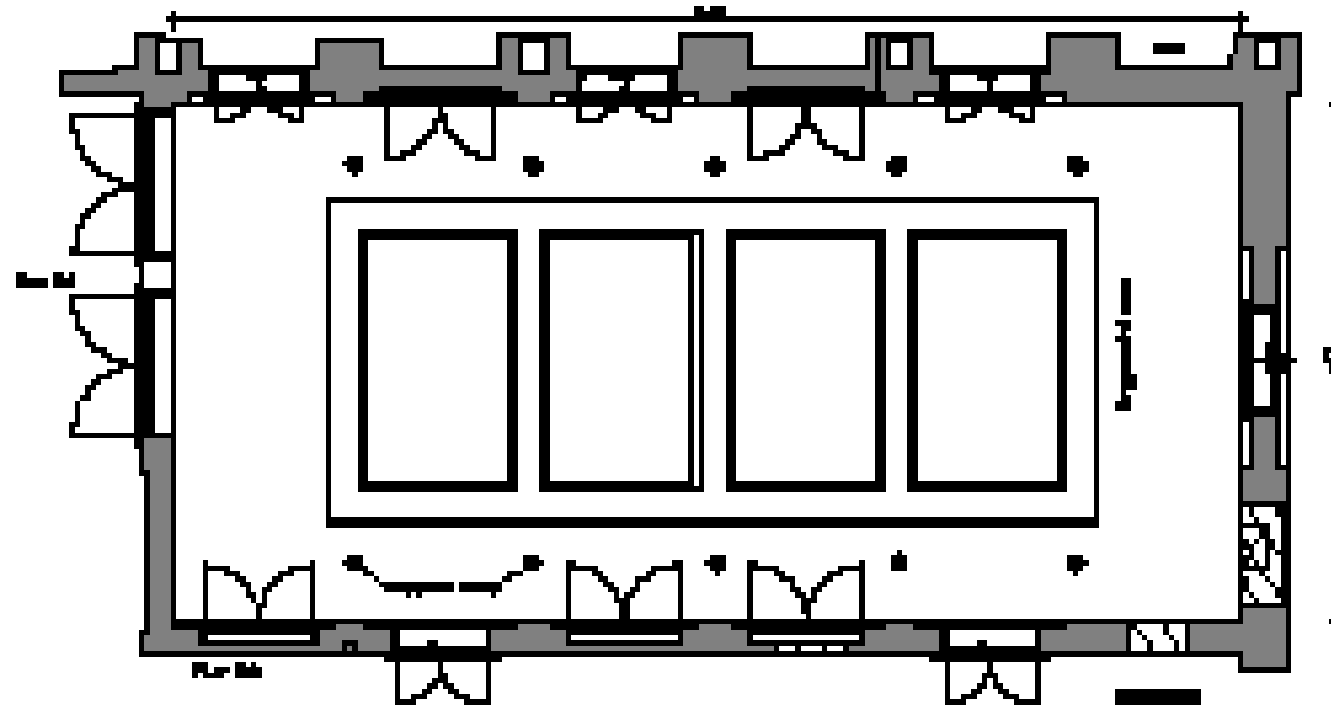
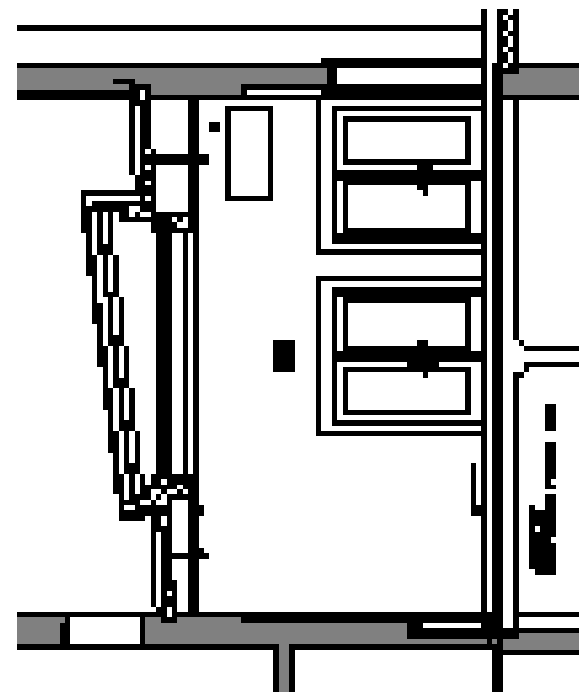
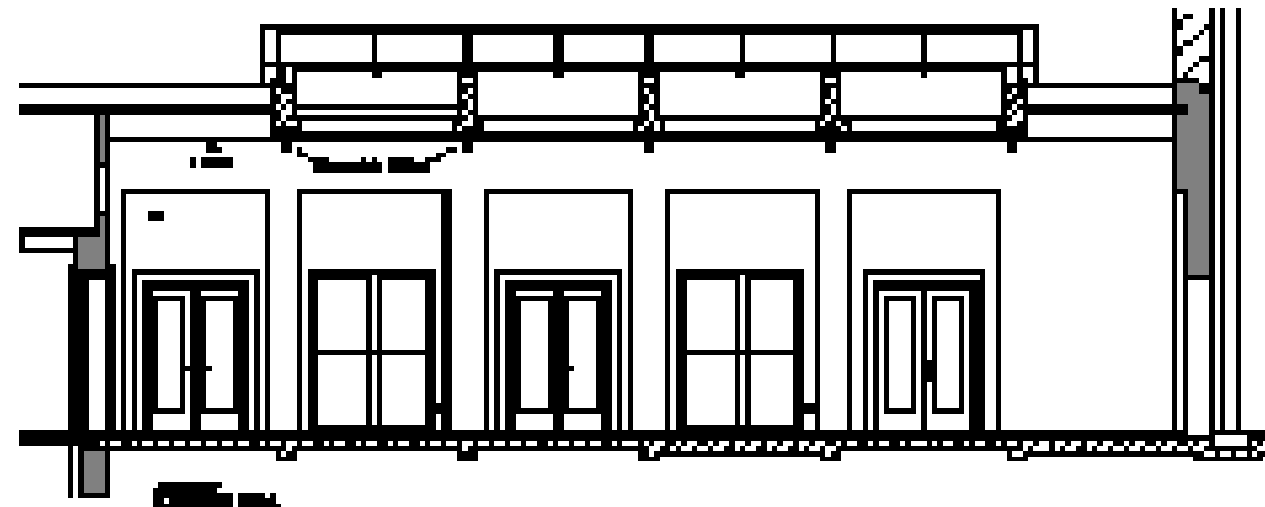
Raumgröße:
 Länge 17 m
 Breite 8 m
 Höhe 4,60 m

Wandfarbe weiß
 Fussboden Terrazzo hellgrau
 (Belastbarkeit 7,5 kN/m²)

Technische Ausstattung:

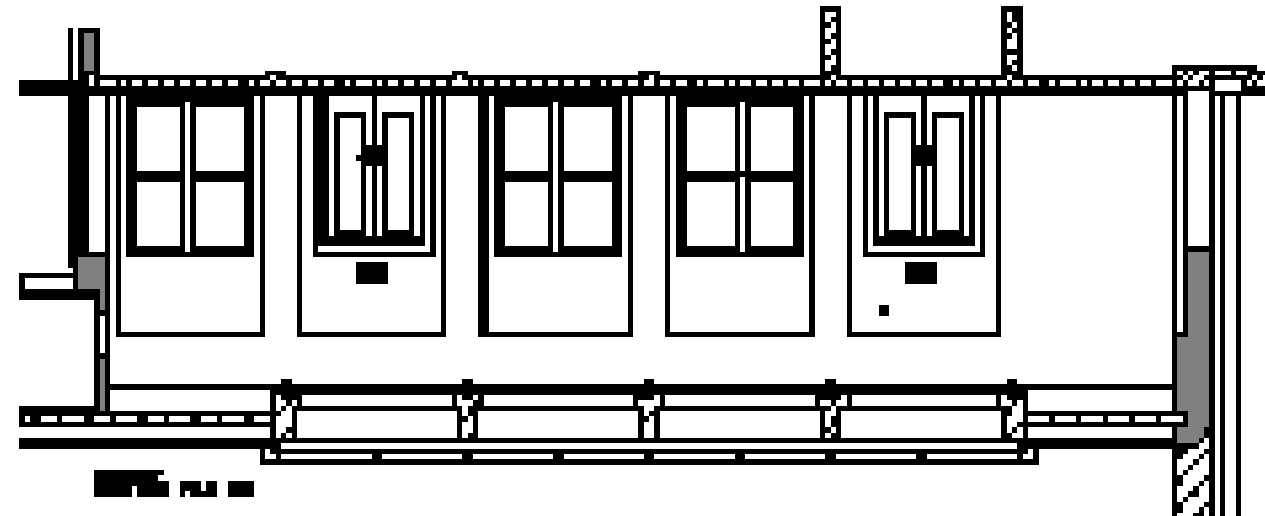
Ergoschiene mit 12 Kreisen

10 Hängepunkte senkrechte Belastung von 100 kg

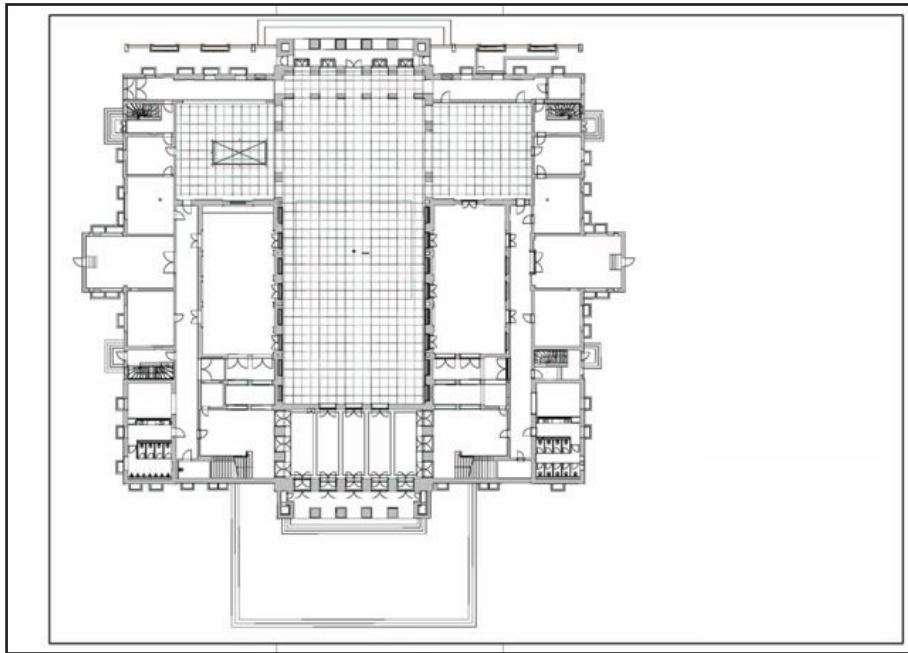


Raumnutzung:

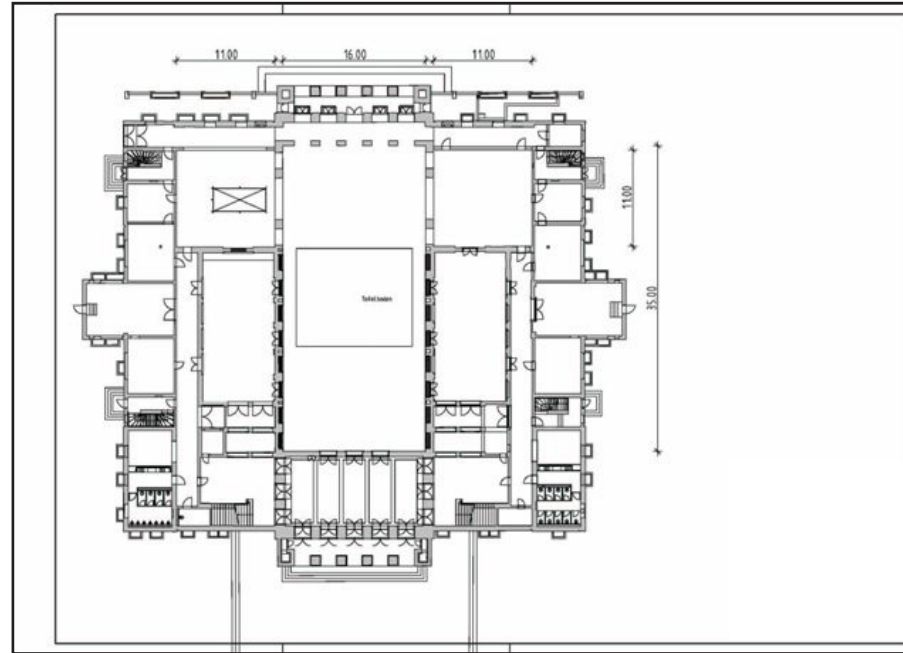
Kammerkonzerte
 Probestühne
 Lounge
 Performance
 Konferenz



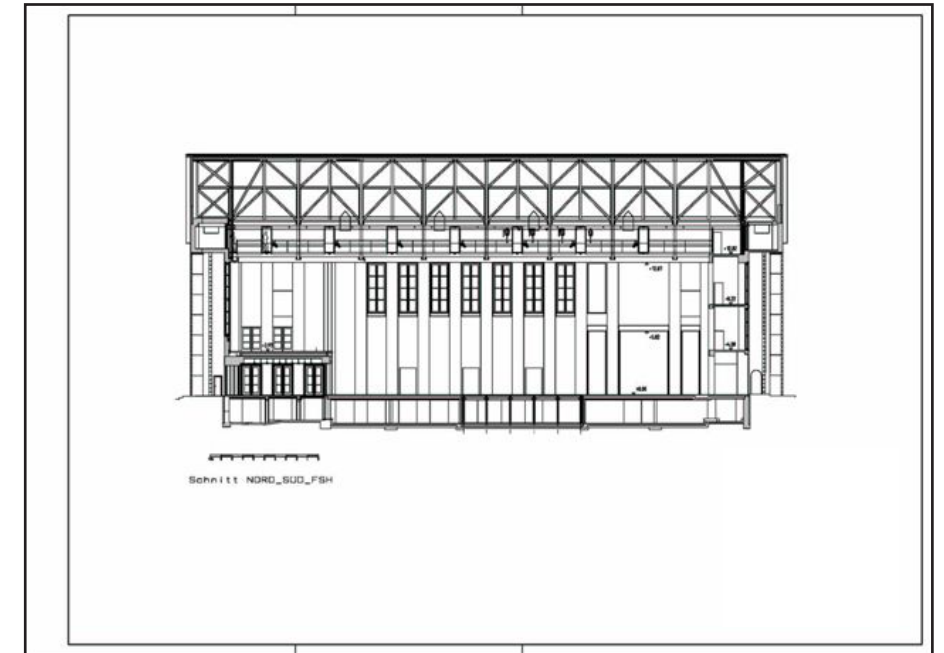
HELLERau	
Produktlinie	COACH mit einem oder Festplatten-Hallensystem
Modell	HELLERau
Spezialmodell	HELLERau



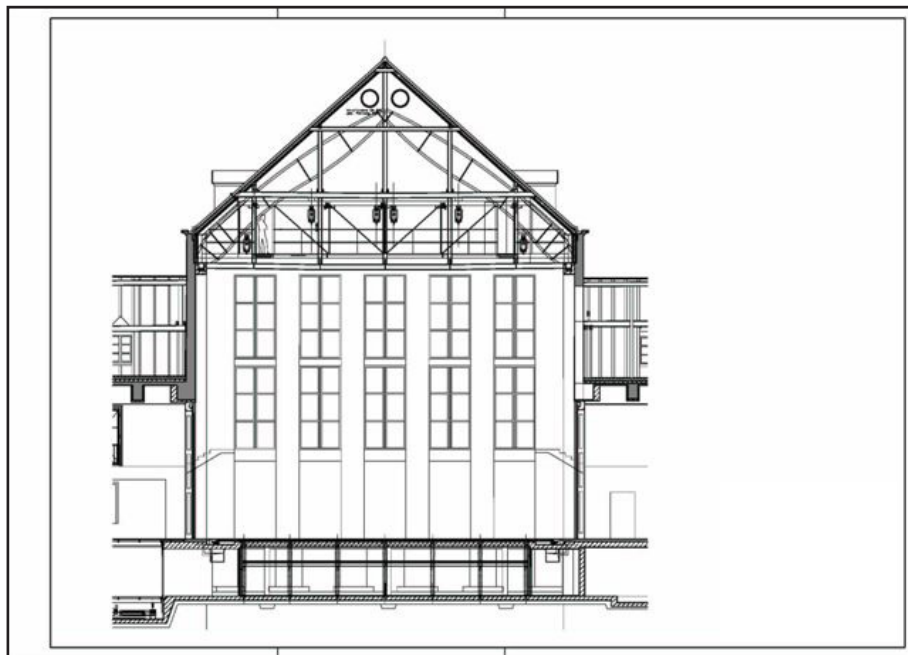
sketches „Großer Saal“ with grid 1 m x 1 m



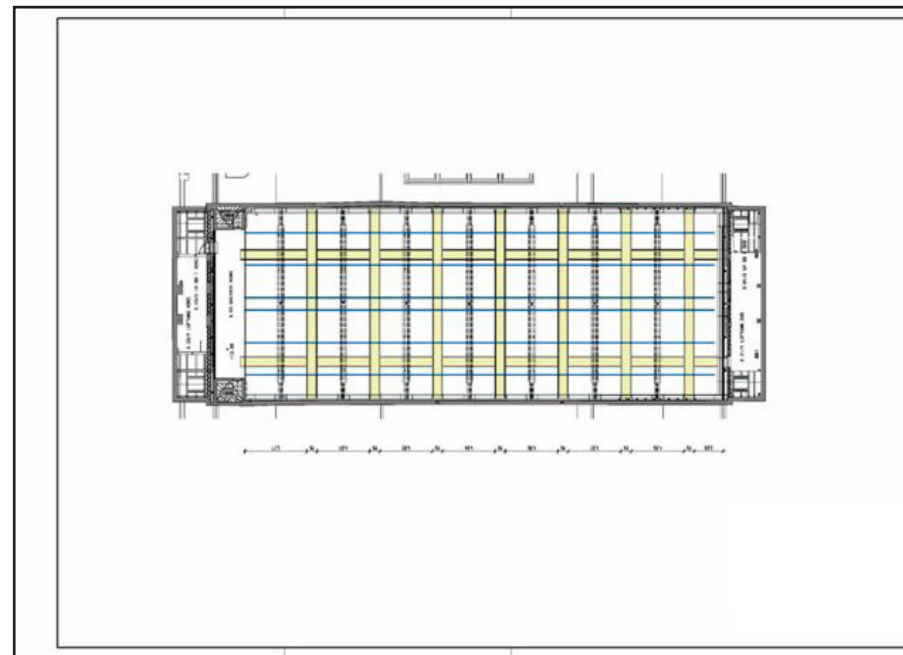
plan ground floor Festspielhaus Hellerau M 1:200 /A3



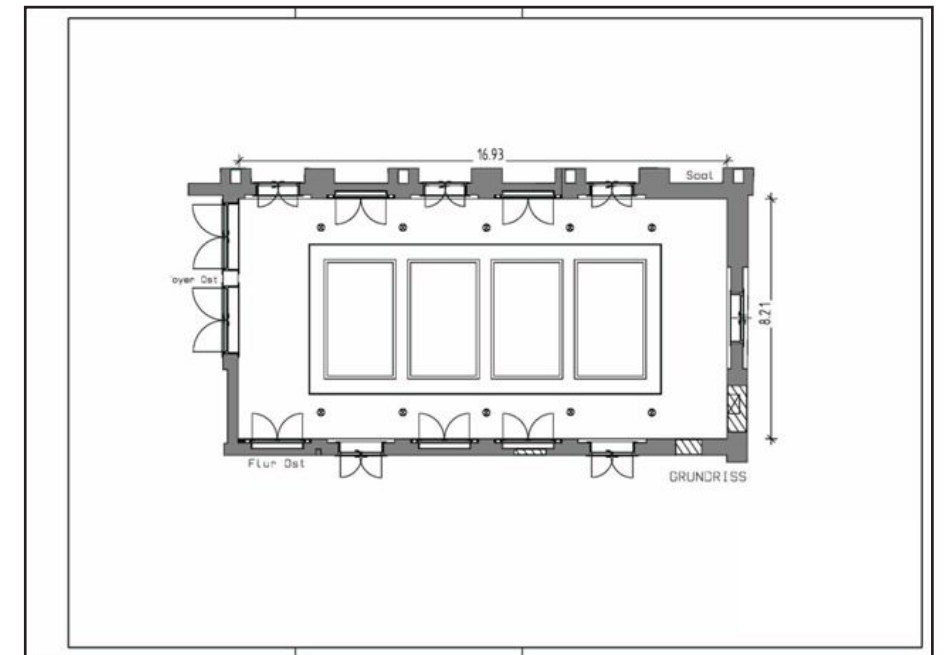
sectional drawing North-South M 1:200 /A3



sectional drawing east-west M 1:100 /A3



ground plot lighting bridges M 1:200 /A3



Grundriss Oberlichtsaal Ost M 1:75 /A3



1 south elevation Festspielhaus Hellerau

Foto: Seidel



2 main hall-view from south gallery

Foto: Seidel



3 main hall-scenical area

Foto: Rous



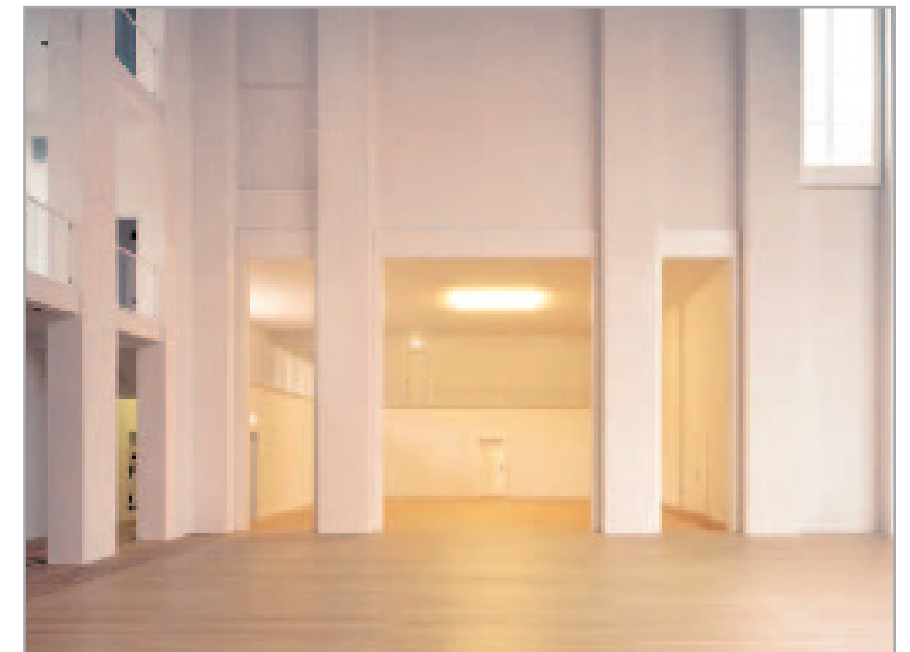
4 main hall- north wall

Foto: Seidel



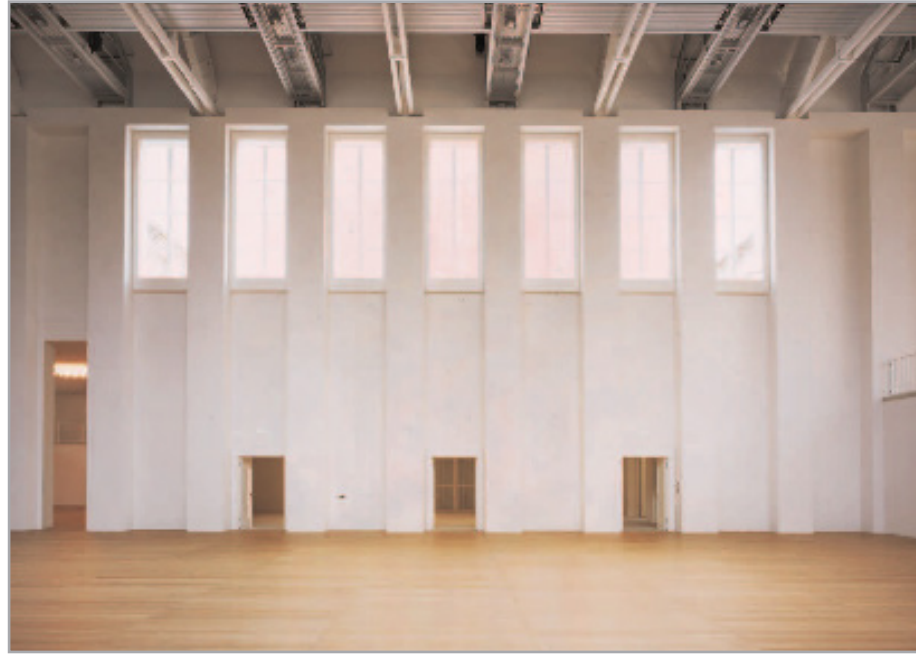
5 main hall-view from north-east

Foto: Seidel



6 main hall-side stage east

Foto: Seidel



7 main hall- view of east wall

Foto: Seidel



8 main hall-view from north

Foto: Seidel



9 main hall-south gallery

Foto: Seidel



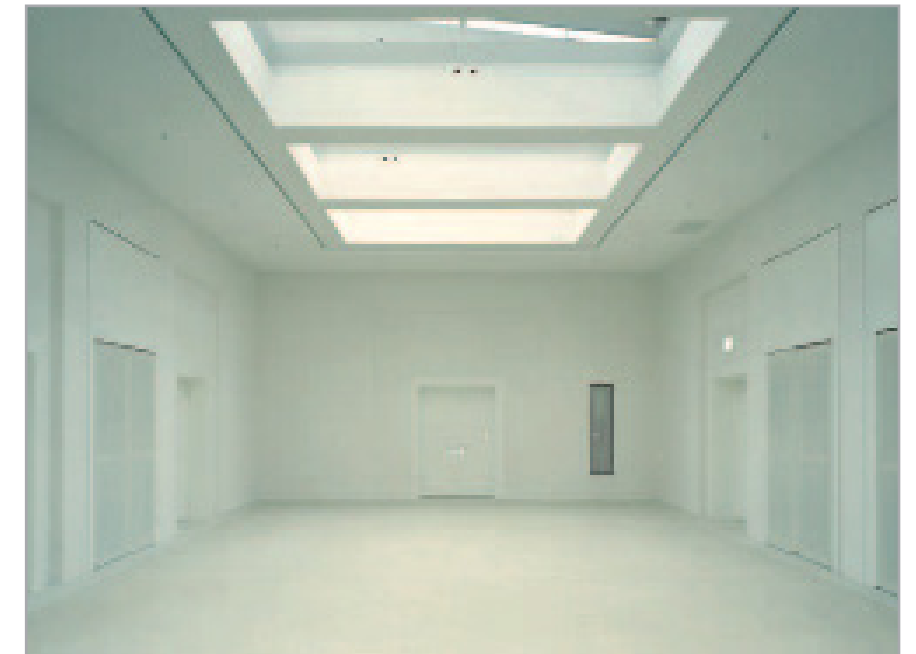
10 main hall-south gallery;

Foto: Seidel



11 south foyer Festspielhaus Hellerau

Foto:Seidel



12 Oberlichtsaal Ost Festspielhaus Hellerau

Foto: Seidel